

FABRICS

COLLECTION

2022



COLLECTION ADELE

FABRIC TECHNICAL DATA

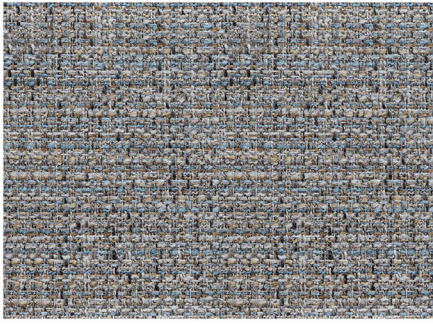
- a) fabric composition: 54% Acrylic, 46% Polyester
- b) weight: 427 g/sqm
- c) abrasion resistance (Martindale test): 50.000 Martindale cycles
- d) pilling resistance (1-5): 4/5

INSTRUCTIONS FOR CLEANING AND MAINTANANCE

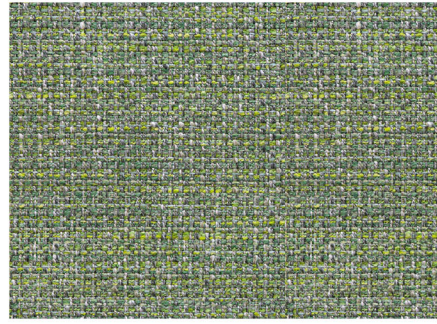
Adele is multi-color structured fabric of a thick weave and a soft surface.

In case of any wet stains, soak up gently with a paper towel, apply some water on the stain and soak up again with a towel. Do not rub the surface. In case of difficult to remove stains, spray some soapy-water on the stain and wipe off with a cloth. Allow fabric to dry. Dry stains such as cigarette ash or dust can be removed with a vacuum cleaner, do not use water for such stains. In case of any extensive dirt, it can be washed at the temp. of 30°C. Before washing, the cushion cover should be turned inside out with its zipper fastened. The fabric is not suitable for bleaching, spinning, drying in a tumble dryer or in the sun. Intense or dark colors may discolor slightly. The cover may shrink gently after washing. When it gets dry, iron only the back side by putting another fabric on it. The ironing is important to reactivate the cleanability features.

A thorough cleaning or removing substantial dirt should be entrusted to professional maintenance services companies. A proper maintenance of the fabric is one of key warranty conditions; any treatments damaging the fabric surface constitute grounds for the rejection of possible complaints.



Adele 02



Adele 07



COLLECTION AGATE

FABRIC TECHNICAL DATA

- a) fabric composition:
 - frontal side: 100% Polyester
- b) weight: 400 g/sqm
- c) abrasion resistance (Martindale test): 75.000 Martindale cycles
- d) pilling resistance (1-5): 5

INSTRUCTIONS FOR CLEANING AND MAINTANANCE

MAINTENANCE:

Velvet-like printed knit

Machine washable at up to 30°C

Do not bleach and spin

Do not dry in a tumble dryer or in the sun

Turn the cushion cover inside out and fasten the zipper before washing

Intense and dark colours may cause slight discoloration

Iron only the back side of the cover at max. 110°C



Agate 1



Agate 2



Agate 3



COLLECTION ARANO

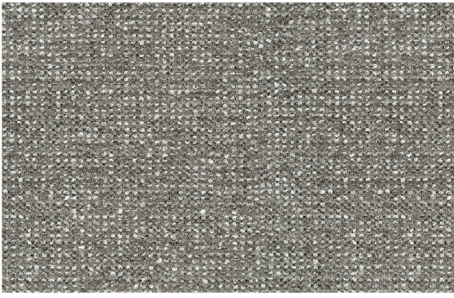
FABRIC TECHNICAL DATA

- a) fabric composition: 100% Polyester (PES)
- b) weight: 330 g/sqm
- c) abrasion resistance (Martindale test): 35.000 Martindale cycles
- d) pilling resistance (1-5): 4

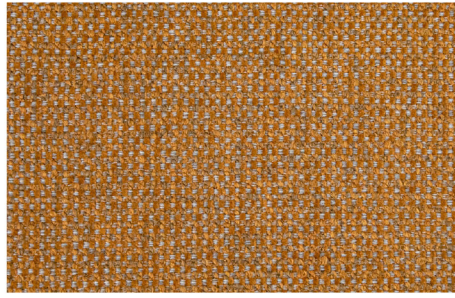
INSTRUCTIONS FOR CLEANING AND MAINTANANCE

Due to the thick and loose weave, the Arano fabric requires particularly careful cleaning. We suggest very gentle cleaning with a soft nozzle. In case of any minor stains, the fabric should be wiped quickly with a dry cloth. Avoid rubbing against a damp surface. The fabric is not machine or hand washable. A thorough cleaning or removing substantial dirt should be assigned to professional maintenance services companies. A proper maintenance of the fabric is one of key warranty conditions; any treatments damaging the fabric surface constitute grounds for the rejection of possible complaints.

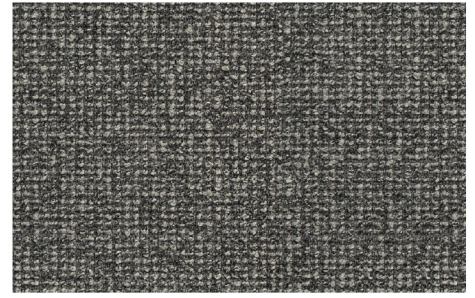
Shades of fabric swatches and those of a furniture covering may vary slightly, that is why each piece of furniture is fitted with a fabric sample to match the right shade in case of the claim.



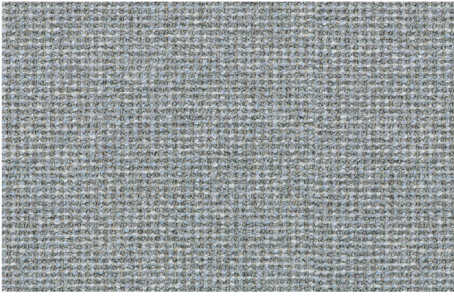
Arano 06



Arano 07



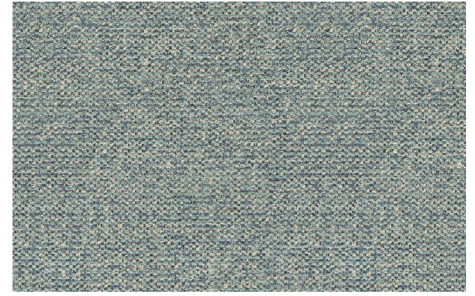
Arano 08



Arano 09



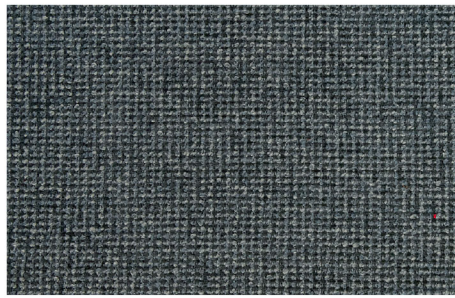
Arano 12



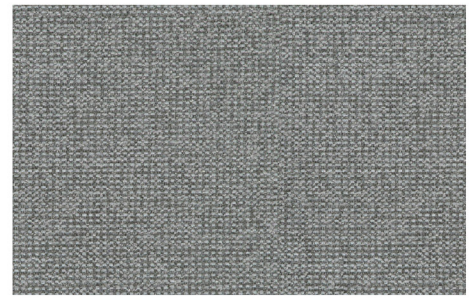
Arano 14



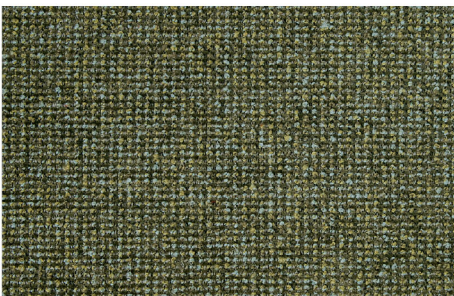
Arano 15



Arano 17



Arano 19



Arano 24

COLLECTION ARIZONA

FABRIC TECHNICAL DATA

- a) fabric composition: 75% Polyester, 25% Polyurethane
- b) weight: 540 g/sqm
- c) abrasion resistance (Martindale test): 60.000 Martindale cycles
- d) pilling resistance (1-5): 5, A cat.

INSTRUCTIONS FOR CLEANING AND MAINTANANCE

CHARACTERISTICS:

Thick, heavy fabric of a very soft surface

Suede-like look

Characteristic, subtle relief structure gives it a noble look

Structure being pleasant to touch ensures a high comfort of use in every season of the year

Does not attract dust

Anti-frayed, pilling resistant

MAINTENANCE:

The ARIZONA fabric is very pleasant to touch.

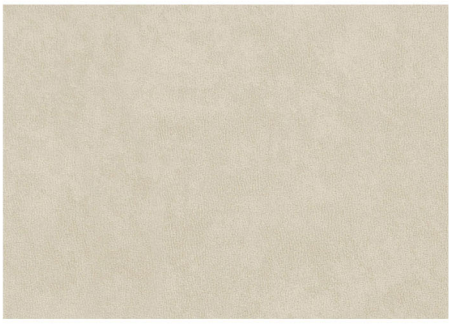
A gentle periodic vacuuming with a soft nozzle is recommended. In case any slight stains appear the fabric should be wiped with a dry cloth. Avoid an excessive rubbing against a damp fabric.

Not suitable for machine-wash.

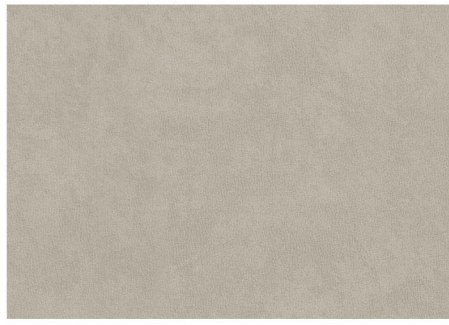
A thorough cleaning or removing substantial dirt should be assigned to professional maintenance services companies. A proper maintenance of the fabric is one of key warranty conditions; any treatments damaging the fabric surface constitute grounds for the rejection of possible complaints.

Arizona fabric may extend slightly during its use. This is not a flaw of the fabric but its natural feature.

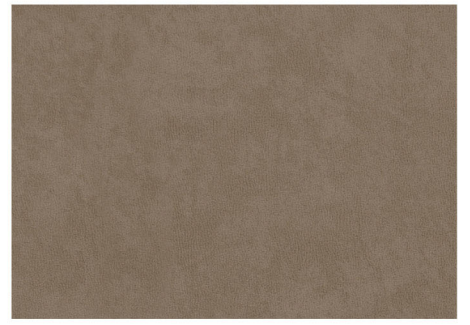
Shades of fabric swatches and those of a furniture covering may vary slightly, that is why each piece of furniture is fitted with a fabric sample to match the right shade in case of the claim.



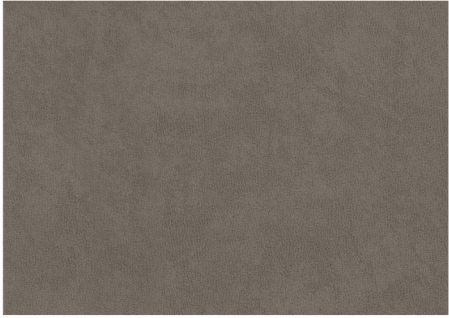
Arizona 1



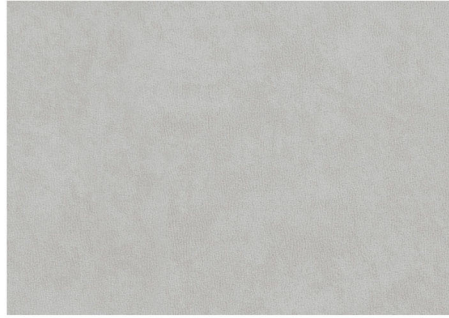
Arizona 2



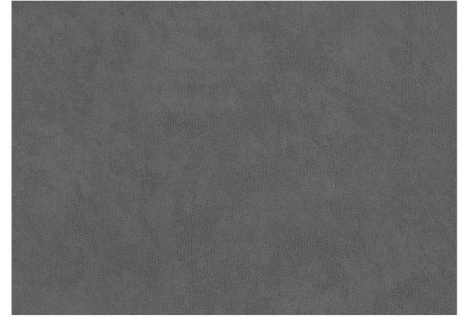
Arizona 3



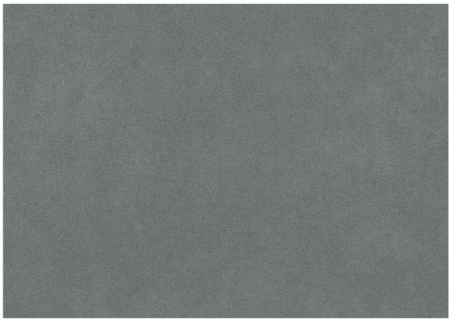
Arizona 4



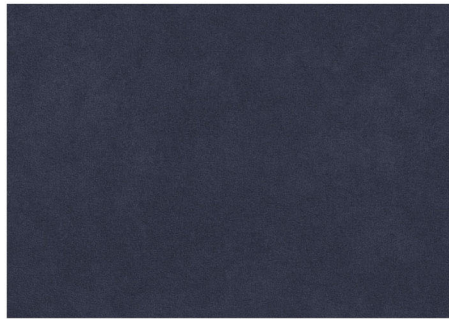
Arizona 5



Arizona 6



Arizona 7



Arizona 8

COLLECTION BASSA

FABRIC TECHNICAL DATA

- a) fabric composition:
 - 50% Polyester
 - 45% Cotton
 - 5% Acrylic
- b) weight: 315 g/m²
- c) lightfastness: 6
- d) pilling resistance: 4-5
- e) abrasion resistance (Martindale test): 25.000 Martindale cycles

INSTRUCTIONS FOR CLEANING AND MAINTANANCE

MAINTENANCE:

Jacquard fabric

Machine washable at up to 30°C

Do not bleach and spin

Do not dry in a tumble dryer or in the sun

Turn the cushion cover inside out and fasten the zipper before washing

Intense and dark colours may cause slight discoloration

Max. ironing temperature: 110°C



Bassa 124



COLLECTION BIGAR

FABRIC TECHNICAL DATA

- a) fabric composition:
 - 50% Polyester
 - 45% Cotton
 - 5% Acrylic
- b) weight: 315 g/m²
- c) lightfastness: 6
- d) pilling resistance: 4-5
- e) abrasion resistance (Martindale test): 25.000 Martindale cycles

INSTRUCTIONS FOR CLEANING AND MAINTANANCE

MAINTENANCE:

Jacquard fabric

Machine washable at up to 30°C

Do not bleach and spin

Do not dry in a tumble dryer or in the sun

Turn the cushion cover inside out and fasten the zipper before washing

Intense and dark colours may cause slight discoloration

Max. ironing temperature: 110°C



Bigar 123

COLLECTION BOLTON

FABRIC TECHNICAL DATA

- a) fabric composition:
 - frontal side: 91% Polyester, 9% Nylon
 - back side: 50% Cotton, 50% Polyester
- b) weight: 468 g/sqm
- c) abrasion resistance (Martindale test): 40.000 Martindale cycles
- d) pilling resistance (1-5): 5

INSTRUCTIONS FOR CLEANING AND MAINTANANCE

CHARACTERISTICS:

Very soft, nice in touch.
Delicate velvety structure with gentle shading effect.
Woven of dyed fibers in two shades what ensures a subtle pattern.
Highly breathable, cotton backing raises use comfort.
Anti-frayed, pilling-resistant.

MAINTENANCE:

For ensuring extra strengthening and better air permeability the Bolton fabric is glued with a thin layer of polyester – cotton backing. To keep fabric in good condition we suggest vacuum cleaning with a soft nozzle. In case any slight stains appear the fabric should be immediately wiped with a dry cloth. Avoid an excessive rubbing against a damp fabric. A thorough cleaning or removing substantial dirt should be assigned to professional maintenance services companies. A proper maintenance of the fabric is one of key warranty conditions; any treatments damaging the fabric surface constitute grounds for the rejection of possible complaints. During use the fabric may stretch gently; this is not a defect of the fabric but its natural feature. Shades of fabric swatches and those of a furniture covering may vary slightly, that is why each piece of furniture is fitted with a fabric sample to match the right shade in case of the claim.

APPLICATION:

The Bolton fabric has excellent physical-mechanical qualities what ensures its versatile application. It perfectly sticks to the furniture surface. The velvety, soft surface looks marvelously on all kinds of classic as well as modern sofas. Due to its universal qualities, it can be used for furniture fitted with moveable elements such as head-rests, armrests or recliners. In case of combining fabric with natural or artificial leather whose extensibility is higher and changes under temperature, the fabric may slightly crease what is not a manufacturing defect.



Bolton 1



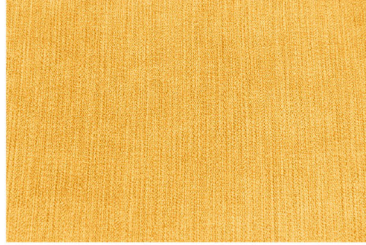
Bolton 5



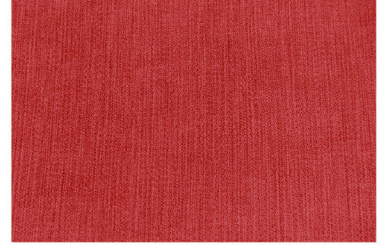
Bolton 7



Bolton 9



Bolton 10



Bolton 14



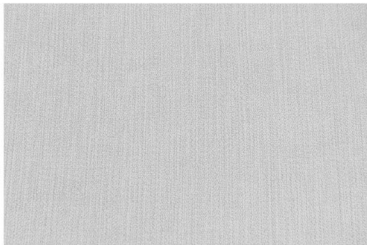
Bolton 16



Bolton 17



Bolton 19



Bolton 21



Bolton 23



Bolton 24

COLLECTION BRAGA

FABRIC TECHNICAL DATA

- a) fabric composition:
 - frontal side: 100% Polyester
- b) weight: 300 g/sqm
- c) abrasion resistance (Martindale test): 40.000 Martindale cycles
- d) pilling resistance (1-5): 4-5

INSTRUCTIONS FOR CLEANING AND MAINTANANCE

CHARACTERISTICS:

- Soft fabric, nice to touch
- Gentle, relief structure gives it a noble look
- Breathable
- Soft polyester backing improves usage comfort;
- Dense structure and polyester fibers ensure a good resistance to abrasion and shrinkage
- Anti-frayed, pilling-resistant
- Rich colours make it suitable for every interior

MAINTENANCE:

Gentle vacuuming with a soft nozzle is recommended once week. In case any slight stains appear the fabric should be wiped with a dry cloth. Avoid an excessive rubbing against a damp fabric.

A thorough cleaning or removing substantial dirt should be assigned to professional maintenance services companies. A proper maintenance of the fabric is one of key warranty conditions; any treatments damaging the fabric surface constitute grounds for the rejection of possible complaints.

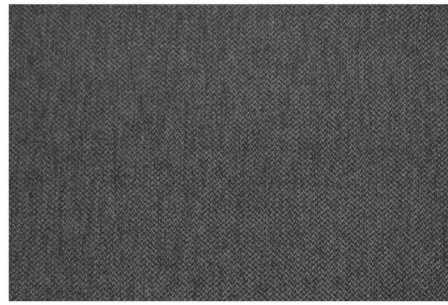
During use the fabric stretches gently what makes some slight folds; this is not a defect of the fabric but its natural feature. Shades of fabric swatches and those of a furniture covering may vary slightly, that is why each piece of furniture is fitted with a fabric sample to match the right shade in case of the claim.

APPLICATION:

The Braga fabric has excellent physical-mechanical qualities what ensures its versatile application. It perfectly sticks to the furniture surface. It is particularly recommended for furniture with moveable elements such as headrests, armrests or recliners. In case of combining fabrics with natural or artificial leather whose extensibility changes according to temperature fluctuations, the fabric may crease slightly what is not a manufacturing defect. The fabric is successfully used for sofas with quilts and decorative stitches.



Braga 07



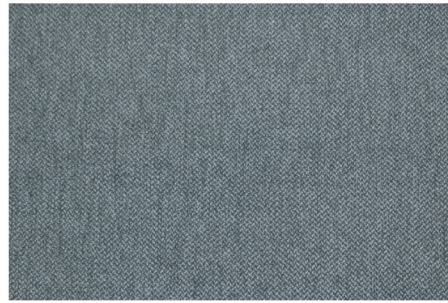
Braga 32



Braga 40



Braga 41



Braga 53



Braga 62



Braga 63



Braga 68



Braga 78



Braga 89



Braga 101



Braga 102

COLLECTION CALDORA

FABRIC TECHNICAL DATA

- a) fabric composition:
 - frontal side: 100% Polyester
- b) weight: 730 g/sqm
- c) abrasion resistance (Martindale test): 35.000 Martindale cycles
- d) pilling resistance (1-5): 4/5

INSTRUCTIONS FOR CLEANING AND MAINTANANCE

CHARACTERISTICS:

- soft, nice to touch
- gentle, irregular structure imitating natural leather
- delicate texture and two shades of the surface give it a noble look
- breathability and high comfort of use in every season of the year
- easy to clean, does not attract dust
- anti-frayed, pilling-resistant

MAINTENANCE:

The Caldora fabric is very comfortable in use. To keep it in good condition we suggest vacuum cleaning with a soft nozzle. In case any slight stains appear the fabric should be immediately wiped with a dry cloth. Avoid an excessive rubbing against a damp fabric. A thorough cleaning or removing substantial dirt should be assigned to professional maintenance services companies. A proper maintenance of the fabric is one of key warranty conditions; any treatments damaging the fabric surface constitute grounds for the rejection of possible complaints. During use the fabric may stretch gently while its fiber may rise a little making it resembles velvet; this is not a defect of the fabric but its natural feature. Shades of fabric swatches and those of a furniture covering may vary slightly, that is why each piece of furniture is fitted with a fabric sample to match the right shade in case of the claim.

APPLICATION:

The Caldora fabric has excellent physical-mechanical qualities what ensures its versatile application. It perfectly sticks to the furniture surface. It is particularly used for sofas bases and armrests. Thanks to its softness and breathability it also can be used for seats and backrests. The velvety, soft surface looks splendidly on both classic and modern modules. Its universal qualities make it suitable for any kind of furniture including this one fitted with moveable elements such as headrests, armrests or recliners.



Caldora 01



Caldora 02



Caldora 03



Caldora 04



Caldora 10



Caldora 16



Caldora 17

COLLECTION CASTLE

FABRIC TECHNICAL DATA

- a) fabric composition: 85% Polyester, 15% Nylon
- b) weight: 380 g/sqm
- c) abrasion resistance (Martindale test): 35.000 Martindale cycles
- d) pilling resistance (1-5): 4

INSTRUCTIONS FOR CLEANING AND MAINTANANCE

CHARACTERISTICS:

Soft and pleasant to touch

Easily visible weave and gentle structure give a rustic, fashionable look

Subtle melange and rich colours range make it fits well every interior

Highly breathable

Ensures high comfort of use in every season of the year

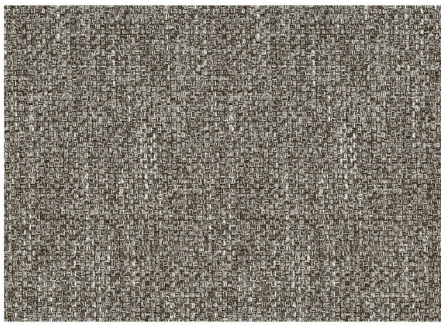
Anti-frayed, pilling resistant

MAINTENANCE:

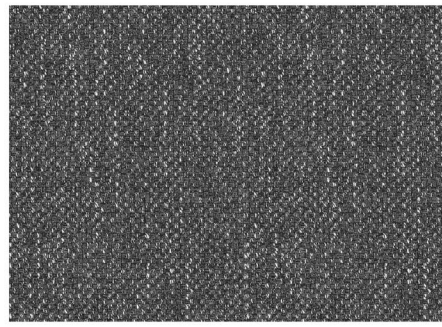
For more comfortable usage and a higher air permeability, the CASTLE fabric is backed with a soft, elastic polyester underlay looking like a felt. A gentle vacuum cleaning with a soft nozzle is recommended once a week. In case any slight stains appear the fabric should be wiped with a dry cloth. Avoid an excessive rubbing against a damp fabric. Not suitable for machine-wash. A thorough cleaning or removing substantial dirt should be assigned to professional maintenance services companies. A proper maintenance of the fabric is one of key warranty conditions; any treatments damaging the fabric surface constitute grounds for the rejection of possible complaints. The material may extend slightly during its use. This is not a flaw of the fabric but its natural feature. Shades of fabric swatches and those of a furniture covering may vary slightly, that is why each piece of furniture is fitted with a fabric sample to match the right shade in case of the claim.

APPLICATION:

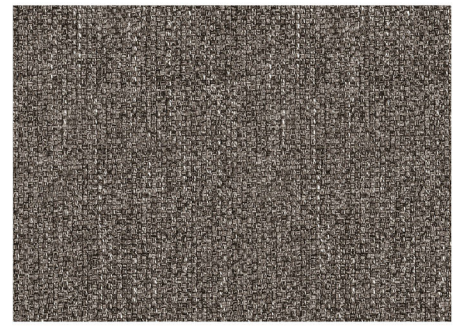
CASTLE fabric has excellent physical-mechanical qualities what ensures its versatile application. It perfectly sticks to the furniture surface. Its woven, soft structure and subtle melange effect look marvelously on both classic as well as modern sofas. Thanks to its universal qualities, it can freely be used for sofas fitted with moveable elements such as head-rests, armrests or recliners. In case of combining fabric with natural or artificial leather whose extensibility is higher and changes under temperature, the fabric may slightly crease what is not a manufacturing defect.



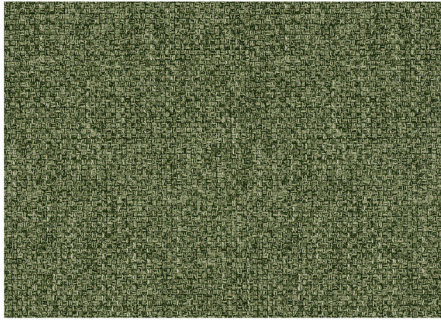
Castle 12



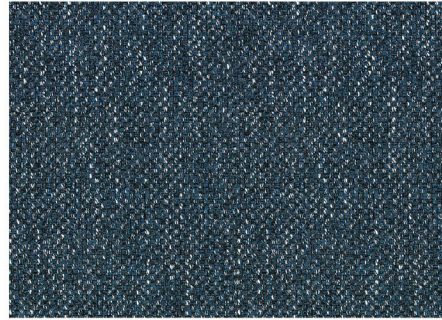
Castle 14



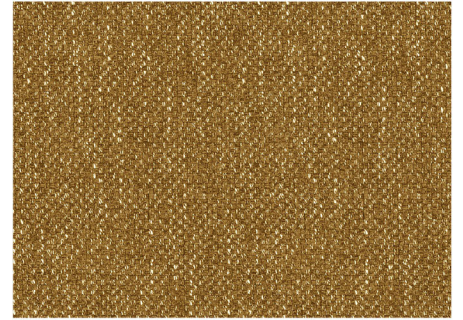
Castle 15



Castle 24



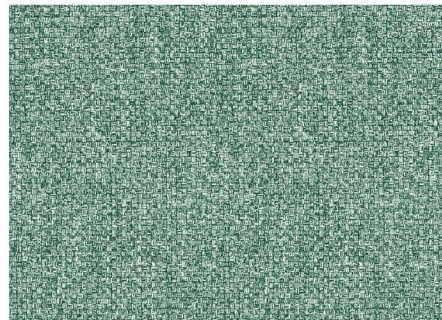
Castle 48



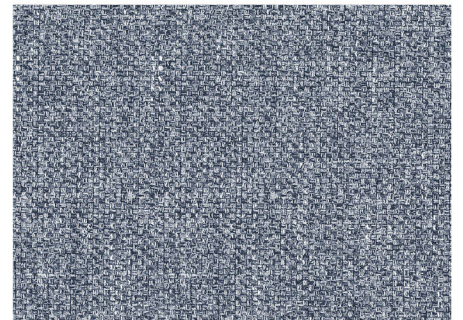
Castle 53



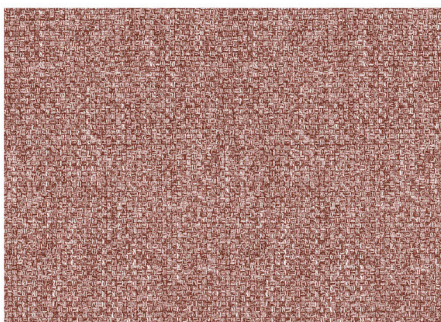
Castle 60



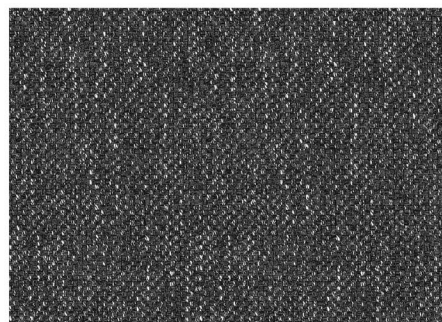
Castle 143



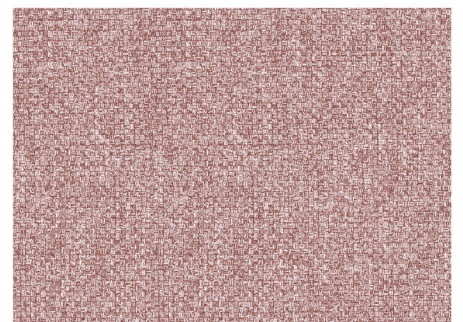
Castle 153



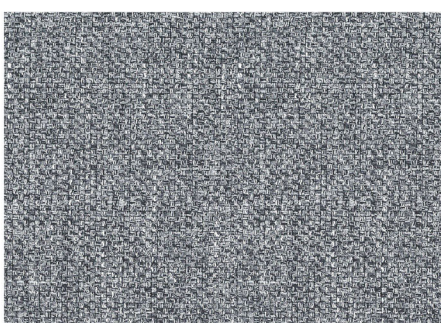
Castle 160



Castle 165



Castle 166



Castle 168

COLLECTION DAKOTA

FABRIC TECHNICAL DATA

- a) fabric composition: 80% Polyester, 20% Polyurethane
- b) weight: 480g/sqm
- c) abrasion resistance (Martindale test): 60.000 Martindale cycles
- d) pilling resistance (1-5): 5

INSTRUCTIONS FOR CLEANING AND MAINTANANCE

CHARACTERISTICS:

- Soft and very pleasant to touch
- Subtle, irregular pattern imitates natural leather look
- Gentle structure and two shades of colour give a feeling of thickness and nobleness
- Breathable, ensures the comfort of use in every season of the year
- Easy to clean, does not attract dust
- Anti-frayed, pilling resistant

MAINTENANCE:

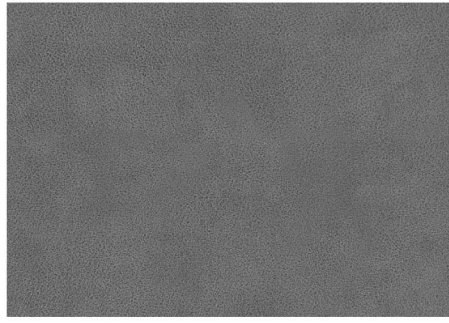
The DAKOTA fabric is very comfortable to use, does not get dirty as quickly as other fabrics. Use a soft nozzle for a gentle periodic vacuuming. In case any slight stains appear the fabric should be wiped with a dry cloth. Avoid an excessive rubbing against a damp fabric. Not suitable for machine-wash. A thorough cleaning or removing substantial dirt should be assigned to professional maintenance services companies. A proper maintenance of the fabric is one of key warranty conditions; any treatments damaging the fabric surface constitute grounds for the rejection of possible complaints. DAKOTA fabric may extend slightly during its use and the fiber it is made of may rise subtly making the fabric looking like a suede. This is not a manufacturing flaw of the material but its natural feature. Shades of fabric swatches and those of a furniture covering may vary slightly, that is why each piece of furniture is fitted with a fabric sample to match the right shade in case of the claim.

APPLICATION:

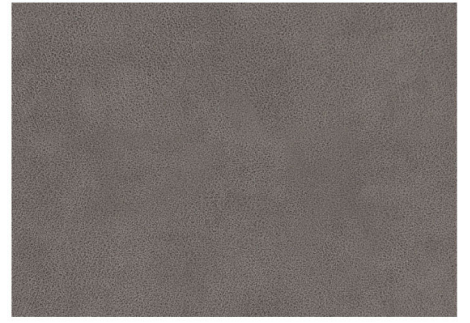
DAKOTA fabric has excellent physical-mechanical qualities what ensures its versatile application. It perfectly sticks to the furniture surface. The material is soft and highly breathable thanks to which it can be used for any sofa elements such as: seats, backrests, armrests, head-rests and bottoms. Its suede-like, soft structure looks beautifully on both classic and modern sofas. Thanks to its universal qualities, it can freely be used for any kinds of sofas, including these ones fitted with moveable elements such as head-rests, armrests or recliners.



Dakota 1



Dakota 2



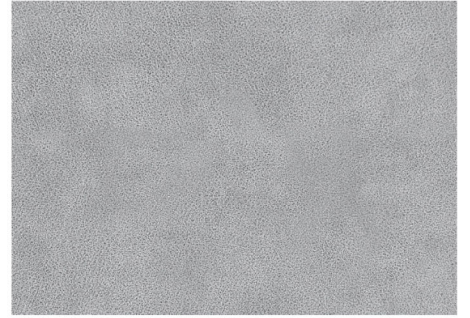
Dakota 3



Dakota 4



Dakota 5



Dakota 6



Dakota 10



Dakota 14



Dakota 15

- a) Fabric composition: 100% Polyester
- b) Weight – 400 g/m²
- c) Abrasion resistance (Martindale test): 75.000 Martindale cycles
- d) Pilling resistance (1-5): 4/5
- e) Fastness to light (1-5): 4

INSTRUCTIONS FOR CLEANING AND MAINTANANCE

CHARACTERISTICS:

- Very soft velvet, nice to touch
- Elegant, matt of a velvety surface
- Perfectly fitting both stylish as well as modern sofas
- Highly breathable
- High comfort of use in every season of the year
- Anti-frayed, pilling resistant

MAINTENANCE:

The DOLCE fabric is a matt velvet of a fibrous surface with fibers lying down in one direction. Once in use its fibers lie down in various directions what causes a shading effect.

To ensure its better adhesion the fabric is backed with a thin layer of a different textile.

To keep it in a good condition we suggest gentle vacuuming with a very soft nozzle according to the direction of fibers placement.

In case any slight stains appear please wipe the dirt off the fabric immediately with a dry cloth and allow the fabric to dry making sure at the same time that the fibrous cover points in the right direction while the fabric is being dried. Do not rub the fabric!

A thorough cleaning or removing substantial dirt should be assigned to professional maintenance services companies.

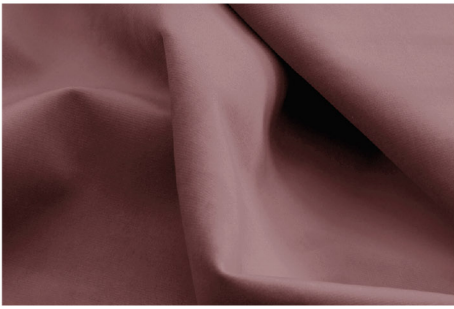
A proper maintenance of the fabric is one of key warranty conditions; any treatments damaging the fabric surface constitute grounds for the rejection of possible complaints.

During use the fabric may stretch gently what heightens the shading effect; this is not a defect of the fabric but its natural, inherent feature.

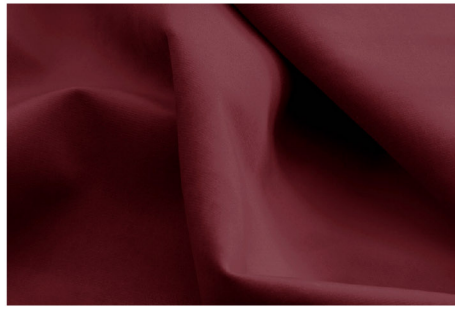
Shades of fabric swatches and those of a furniture covering may vary slightly, that is why each piece of furniture is fitted with a fabric sample to match the right shade in case of the claim.

APPLICATION:

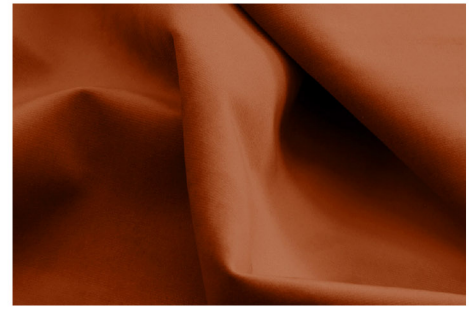
The DOLCE fabric is of a versatile application. It perfectly sticks to the furniture surface giving it a characteristic, elegant look. It is highly suitable for stylish, modern and trendy sofas and decorative cushions. Velvety and soft surface of the fabric as well as its gentle shading effect create an immediate impression of a relaxation comfort.



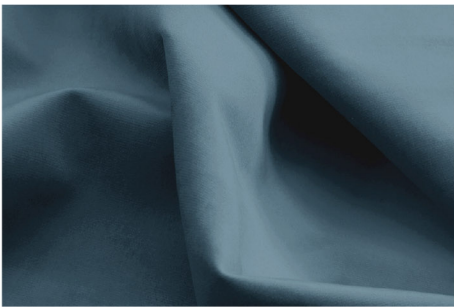
Dolce 01



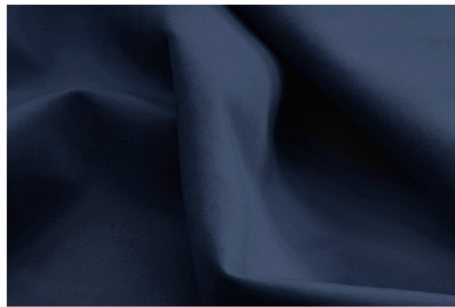
Dolce 02



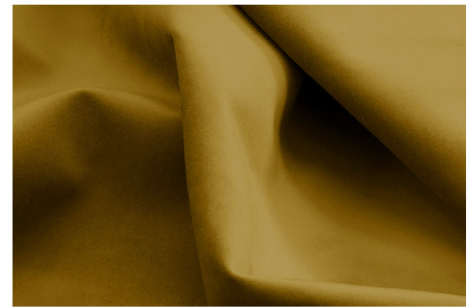
Dolce 03



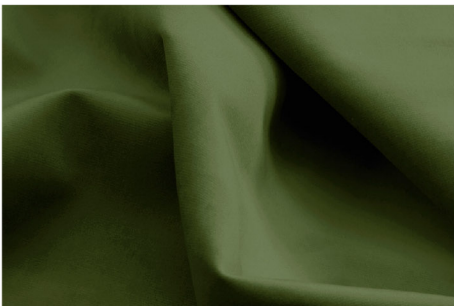
Dolce 04



Dolce 05



Dolce 06



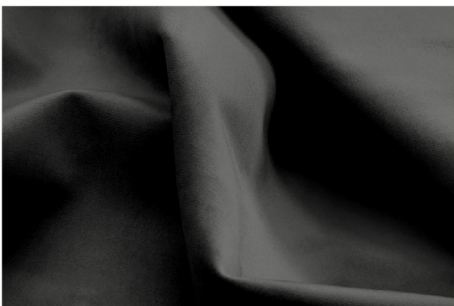
Dolce 08



Dolce 10



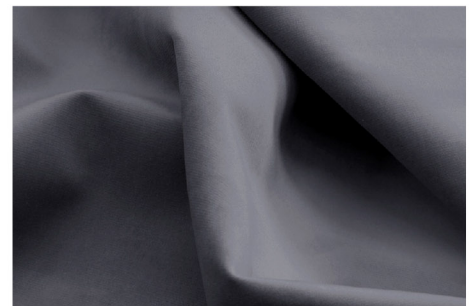
Dolce 11



Dolce 12



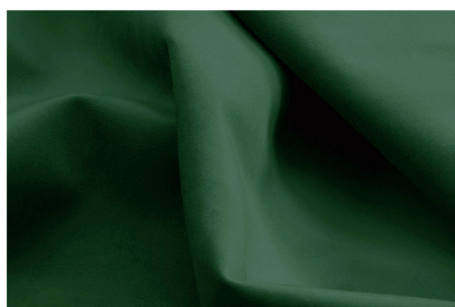
Dolce 13



Dolce 14



Dolce 15



Dolce 17

COLLECTION FOGO

FABRIC TECHNICAL DATA

- a) fabric composition: 100% Polyester
- b) weight: 289 g/sqm
- c) abrasion resistance (Martindale test): 30.000 Martindale cycles
- d) pilling resistance (1-5): 4/5

INSTRUCTIONS FOR CLEANING AND MAINTANANCE

Fogo is a two-color jacquard fabric of a nice touch and a linen-like surface.

In case any of any wet stains, remove dirt with a paper towel and allow fabric to dry. Do not rub the surface. In case of any extensive dirt, it can be washed by hand. The fabric is not suitable for bleaching, spinning, drying in a tumble dryer or in the sun. Intense or dark colors may discolor slightly. The cover may shrink gently after washing. Fabric should not be ironed.

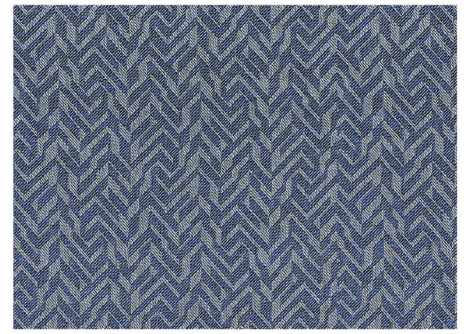
A thorough cleaning or removing substantial dirt should be entrusted to professional maintenance services companies. A proper maintenance of the fabric is one of key warranty conditions; any treatments damaging the fabric surface constitute grounds for the rejection of possible complaints.



Fogo 14



Fogo 25



Fogo 37

COLLECTION GOMERA

FABRIC TECHNICAL DATA

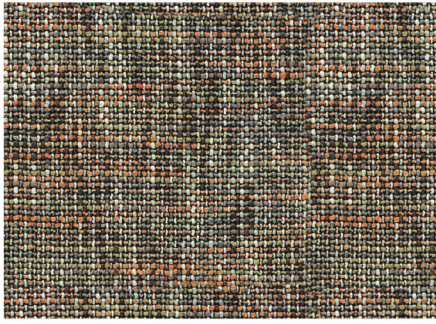
- a) fabric composition: 100% PL
- b) weight: 490 g/sqm
- c) abrasion resistance (Martindale test): 40.000 Martindale cycles
- d) pilling resistance (1-5): 4

INSTRUCTIONS FOR CLEANING AND MAINTANANCE

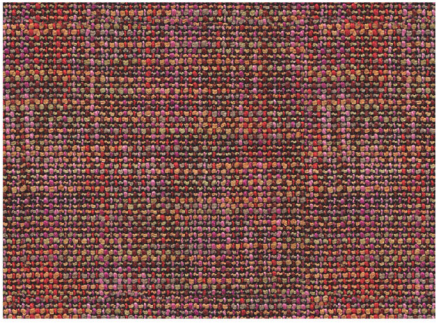
Gomera is multi-color structured fabric with a thick weave and a soft surface.

In case any of any wet stains, remove dirt with a paper towel and allow fabric to dry. Do not rub the surface. In case of any extensive dirt, it can be washed at the temp. of 30°C. Before washing, the cushion cover should be turned inside out with its zipper fastened. The fabric is not suitable for bleaching, spinning, drying in a tumble dryer or in the sun. Intense or dark colors may discolor slightly. The cover may shrink gently after washing. Iron only the back side of cover at max. temp. of 110°C .

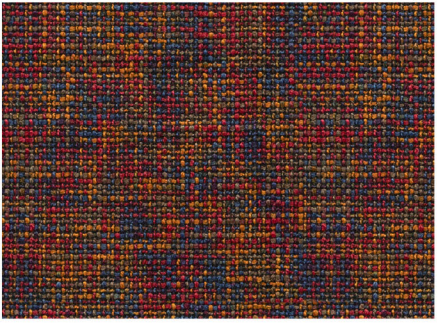
A thorough cleaning or removing substantial dirt should be entrusted to professional maintenance services companies. A proper maintenance of the fabric is one of key warranty conditions; any treatments damaging the fabric surface constitute grounds for the rejection of possible complaints.



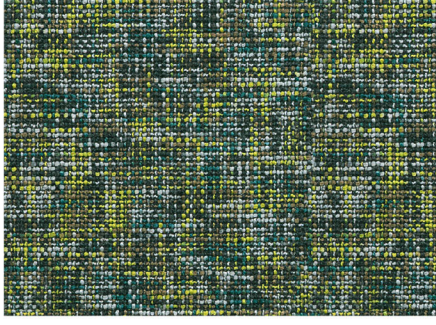
Gomera 05



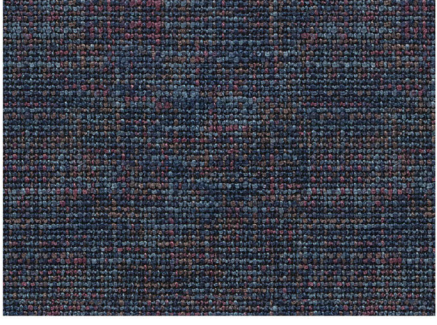
Gomera 09



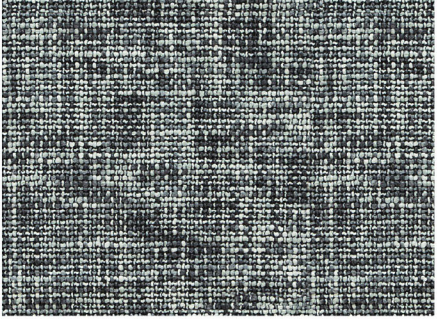
Gomera 10



Gomera 13



Gomera 14



Gomera 27

COLLECTION GUSTO

FABRIC TECHNICAL DATA

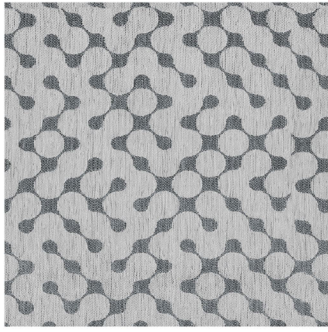
- a) fabric composition: 100% Polyester
- b) weight: 700 g/m²
- c) lightfastness: 7
- d) pilling resistance: 4-5
- e) abrasion resistance (Martindale test): 40.000 Martindale cycles
- f) pilling resistance: 4-5

INSTRUCTIONS FOR CLEANING AND MAINTANANCE

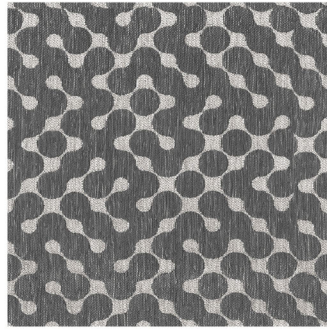
MAINTENANCE:

- two-colored jacquard fabric with chenille yarn
- should be washed by hand
- do not bleach and spin
- do not dry in a tumble dryer or in the sun
- turn the cushion cover inside out and fasten the zipper before washing
- intense and dark colours may cause slight discoloration
- iron only the back side of the cover at max. 110°C

CATEGORY H



Gusto 215



Gusto 216

COLLECTION HAVANA

FABRIC TECHNICAL DATA

- a) fabric composition: 100% Polyester
- b) weight: 320 g/sqm
- c) abrasion resistance (Martindale test): 100.000 Martindale cycles
- d) pilling resistance (1-5): 5

INSTRUCTIONS FOR CLEANING AND MAINTANANCE

CHARACTERISTICS:

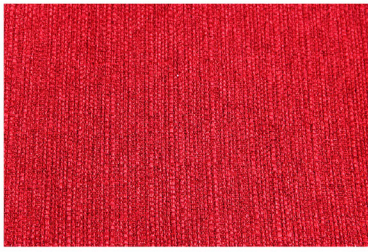
Matt surface, nice in touch.
Original, irregular structure of braid.
Highly breathable.
Resistant to abrasion and shrinkage.
Does not attract dust.
Anti-frayed, pilling-resistant.

MAINTENANCE:

For a better air permeability the Havana fabric is not glued with any backing. It does not attract dust. To keep it in good condition we suggest vacuum cleaning with a soft nozzle. In case any slight stains appear the fabric should be immediately wiped with a dry cloth. Avoid an excessive rubbing against a damp fabric. A thorough cleaning or removing substantial dirt should be assigned to professional maintenance services companies. A proper maintenance of the fabric is one of key warranty conditions; any treatments damaging the fabric surface constitute grounds for the rejection of possible complaints. During use the fabric may stretch gently; this is not a defect of the fabric but its natural feature. Shades of fabric swatches and those of a furniture covering may vary slightly, that is why each piece of furniture is fitted with a fabric sample to match the right shade in case of the claim.

APPLICATION:

The Havana fabric has excellent physical-mechanical qualities what ensures its versatile application. It perfectly sticks to the furniture surface. Most of the time it is used for seats, backrest and decorative cushions. It is particularly recommended for furniture fitted with moveable elements such as head-rests, armrests or recliners. The fabric is successively applied as a covering of sofas with quilts and decorative stitches.



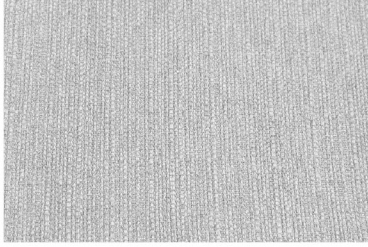
Havana 1



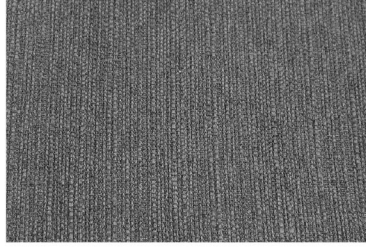
Havana 4



Havana 5



Havana 13



Havana 16



Havana 21



Havana 25

COLLECTION INFINITY

FABRIC TECHNICAL DATA

- a) fabric composition:
 - frontal side: 100% Polyester
- b) weight: 390 g/sqm
- c) abrasion resistance (Martindale test): 105.000 Martindale cycles
- d) pilling resistance (1-5): 4/5

INSTRUCTIONS FOR CLEANING AND MAINTANANCE

CHARACTERISTICS:

- very soft velvet, elegant, nice to touch
- slightly shiny, relief surface, shaded colors
- perfectly matches stylish and modern furniture
- highly breathable, high usage comfort
- pilling resistant

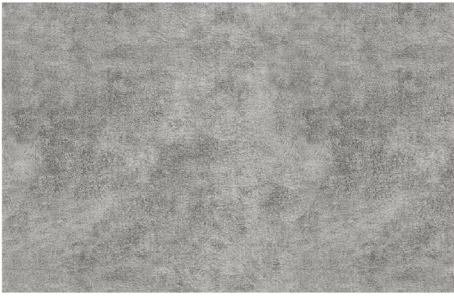
MAINTENANCE:

We recommend gentle cleaning with a soft brush. Not machine washable.

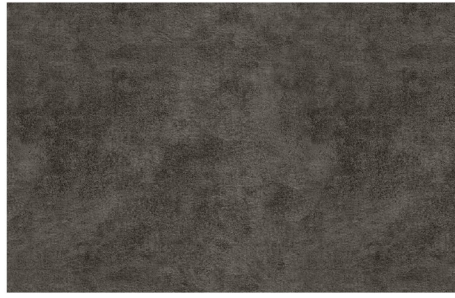
In case of wet stains, remove the dirt quickly with a dry cloth and allow the fabric to dry. Do not rub the fabric!

A thorough cleaning or removing substantial dirt should be entrusted to professional maintenance services companies. A proper maintenance of the fabric is one of key warranty conditions; any treatments damaging the fabric surface constitute grounds for the rejection of possible complaints.

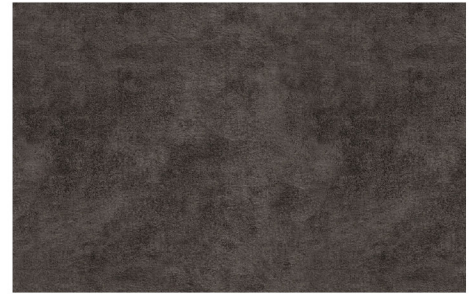
Shades of fabric swatches and those of the furniture covering may vary slightly.



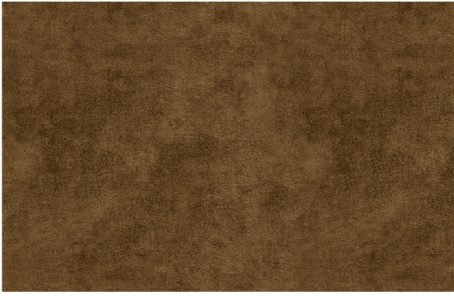
Infinity 02



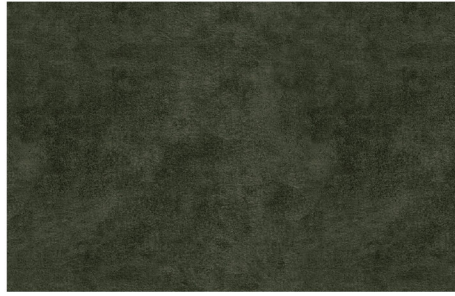
Infinity 03



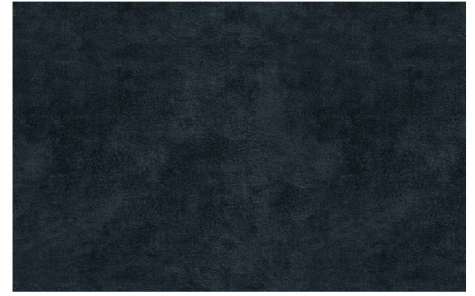
Infinity 05



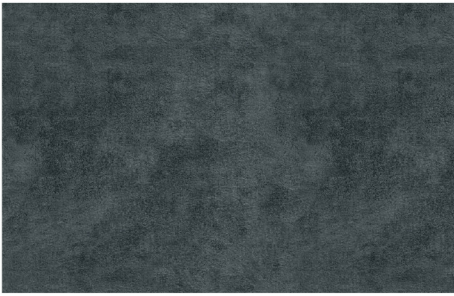
Infinity 08



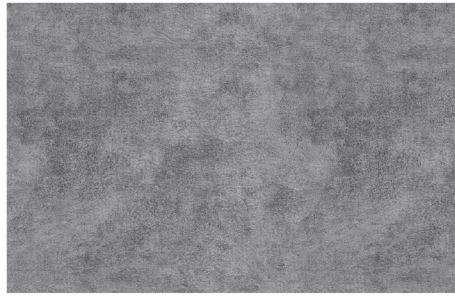
Infinity 10



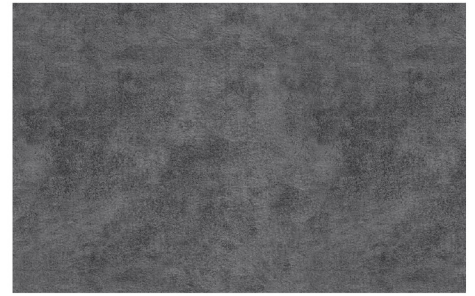
Infinity 11



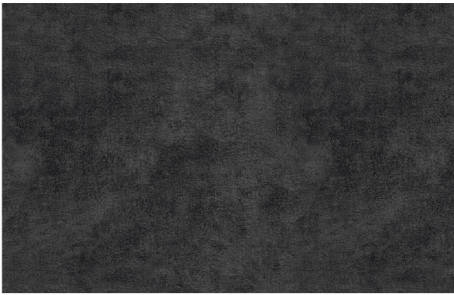
Infinity 12



Infinity 14



Infinity 15



Infinity 16

COLLECTION KYOTO

FABRIC TECHNICAL DATA

- a) fabric composition:
 - frontal side: 100% Polyester
- b) weight: 410 g/sqm
- c) abrasion resistance (Martindale test): 25.000 Martindale cycles
- d) pilling resistance (1-5): 4

INSTRUCTIONS FOR CLEANING AND MAINTANANCE

CHARACTERISTICS:

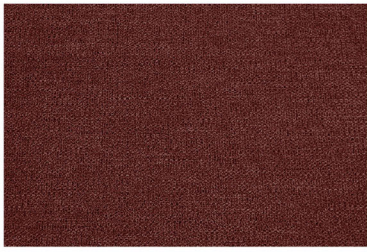
- nice to touch
- very soft structure with gentle shading effect
- woven of dyed fibers in two shades that provides an original look of the surface
- highly breathable
- anti-frayed, pilling-resistant

MAINTENANCE:

For a proper strengthening and ensuring a better air permeability the fabric is secured with a thin polyester knitwear underlay. To keep fabric in good condition we suggest vacuum cleaning with a soft nozzle. In case any slight stains appear the fabric should be immediately wiped with a dry cloth. Avoid an excessive rubbing against a damp fabric. A thorough cleaning or removing substantial dirt should be assigned to professional maintenance services companies. A proper maintenance of the fabric is one of key warranty conditions; any treatments damaging the fabric surface constitute grounds for the rejection of possible complaints. During use the fabric may stretch gently; this is not a defect of the fabric but its natural feature. Shades of fabric swatches and those of a furniture covering may vary slightly, that is why each piece of furniture is fitted with a fabric sample to match the right shade in case of the claim.

APPLICATION:

The Kyoto fabric has excellent physical-mechanical qualities what ensures its versatile application. It perfectly sticks to the furniture surface. The velvety, soft surface looks marvelously on all kinds of classic as well as modern sofas. Due to its universal qualities, it can be used for furniture fitted with moveable elements such as head-rests, armrests or recliners. In case of combining fabric with natural or artificial leather whose extensibility is higher and changes under temperature, the fabric may crease slightly what is not a manufacturing defect.



Kyoto 02



Kyoto 05



Kyoto 07



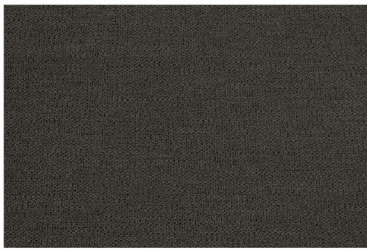
Kyoto 08



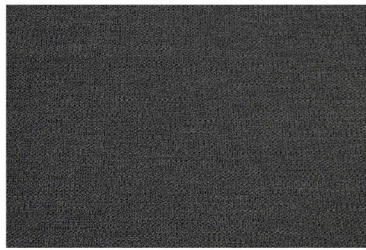
Kyoto 10



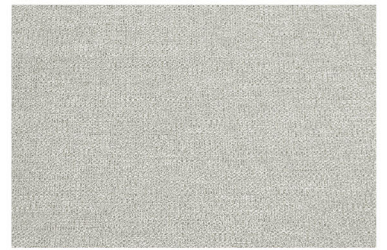
Kyoto 11



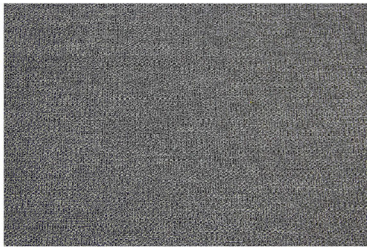
Kyoto 12



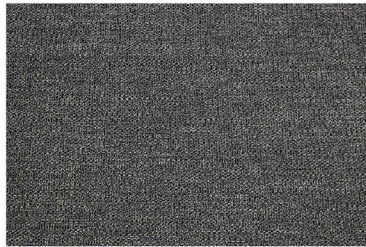
Kyoto 13



Kyoto 15



Kyoto 16



Kyoto 20

COLLECTION LAGO

FABRIC TECHNICAL DATA

- a) fabric composition: 100% Polyester
- b) weight: 493 g/sqm
- c) abrasion resistance (Martindale test): 80.000 Martindale cycles
- d) pilling resistance (1-5): 4-5
- e) fastness to light (1-8): 4

INSTRUCTIONS FOR CLEANING AND MAINTANANCE

CHARACTERISTICS:

- soft, nice in touch
- a unique embossed relief structure imitates natural leather
- natural colours make it suitable into any interior
- breathable, high comfort of use in every season of the year
- soft polyester backing improves usage comfort
- does not attract dust
- anti-frayed, pilling-resistant

MAINTENANCE:

The Lago fabric is very comfortable and safe in use. To keep it in good condition we suggest vacuum cleaning with a soft nozzle once a week.

In case any slight stains appear the fabric should be immediately wiped with a dry cloth. Avoid an excessive rubbing against a damp fabric.

The fabric is not machine washable, hand wash at 30° C. Do not iron.

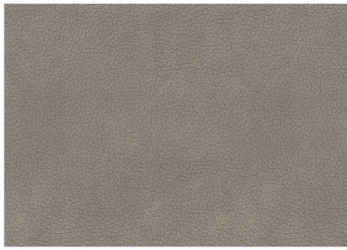
A thorough cleaning or removing substantial dirt should be assigned to professional maintenance services companies. A proper maintenance of the fabric is one of key warranty conditions; any treatments damaging the fabric surface constitute grounds for the rejection of possible complaints. During use the fabric may stretch gently while its fiber may rise a little making it resembles velvet; this is not a defect of the fabric but its natural feature.

Shades of fabric swatches and those of a furniture covering may vary slightly, that is why each piece of furniture is fitted with a fabric sample to match the right shade in case of the claim.

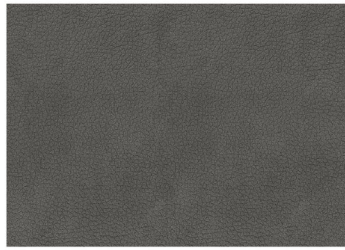
APPLICATION:

The Lago fabric has excellent physical-mechanical qualities what ensures its versatile application. It perfectly sticks to the furniture surface. It is recommended for all types of furniture designed for classic and modern interiors. It is successfully used in sofas fitted with moveable elements such as head-rests, armrests and recliners.

In case of combining fabrics with natural or artificial leather whose extensibility changes according to temperature fluctuations, the fabric may crease slightly what is not a manufacturing defect. The fabric is successively used for sofas



Lago 01



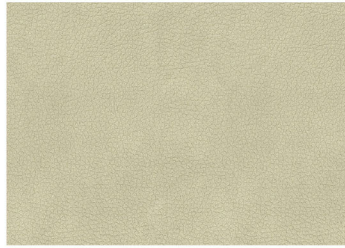
Lago 02



Lago 03



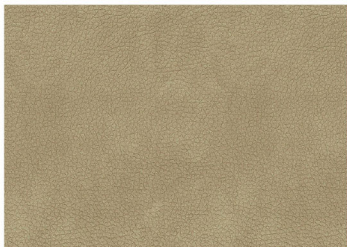
Lago 04



Lago 05



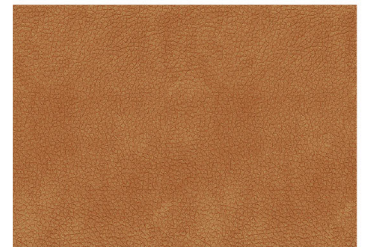
Lago 06



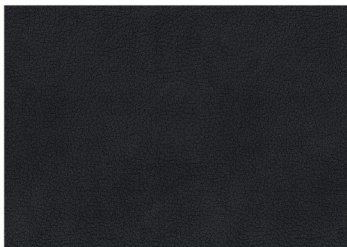
Lago 07



Lago 08



Lago 09



Lago 10



COLLECTION LEAVES

FABRIC TECHNICAL DATA

- a) fabric composition:
 - frontal side: 100% Polyester
- b) weight: 310 g/sqm
- c) abrasion resistance (Martindale test): 75.000 Martindale cycles
- d) pilling resistance (1-5): 5

INSTRUCTIONS FOR CLEANING AND MAINTANANCE

MAINTENANCE:

Velvet-like printed knit

Machine washable at up to 30°C

Do not bleach and spin

Do not dry in a tumble dryer or in the sun

Turn the cushion cover inside out and fasten the zipper before washing

Intense and dark colours may cause slight discoloration

Iron only the back side of the cover at max. 110°C

CATEGORY H



Leaves 2

COLLECTION LISBOA

FABRIC TECHNICAL DATA

- a) fabric composition: 100% Polyester
- b) weight: 386 g/sqm
- c) abrasion resistance (Martindale test): 40.000 Martindale cycles
- d) pilling resistance (1-5): 4
- e) fastness to light (1-5): 4

INSTRUCTIONS FOR CLEANING AND MAINTANANCE

CHARACTERISTICS:

- Soft fabric, nice in touch
- Gentle, relief structure and subtle gloss gives it a noble look
- Rich colours range makes it suitable for every interior
- Highly breathable
- Soft polyester backing improves usage comfort;
- good resistance to abrasion and shrinkage
- Anti-frayed, pilling-resistant

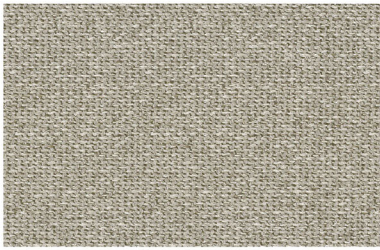
MAINTENANCE:

The Lisboa fabric is very comfortable and in use. We suggest very gentle cleaning with a soft nozzle. It does not feature any chemical end-use finish protecting against water absorbing or staining. In case of any minor stains, the fabric should be wiped quickly with a dry cloth. Avoid rubbing against a damp surface. The fabric is not machine or hand washable. A thorough cleaning or removing substantial dirt should be assigned to professional maintenance services companies. A proper maintenance of the fabric is one of key warranty conditions; any treatments damaging the fabric surface constitute grounds for the rejection of possible complaints. During use the fabric stretches gently what makes some slight folds; this is not a defect of the fabric but its natural feature. Shades of fabric swatches and those of a furniture covering may vary slightly, that is why each piece of furniture is fitted with a fabric sample to match the right shade in case of the claim.

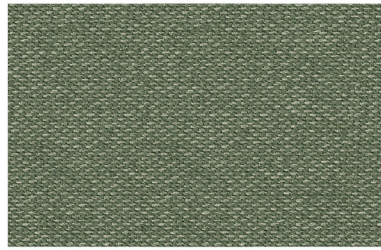
APPLICATION:

The Lisboa fabric has excellent physical-mechanical qualities what ensures its versatile application. It perfectly sticks to the furniture surface. It is recommended for all types of furniture designed for classic and modern interiors. It is successfully used in sofas fitted with moveable elements such as head-rests, armrests and recliners.

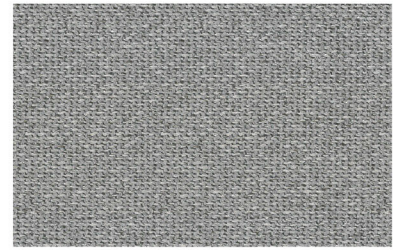
In case of combining fabrics with natural or artificial leather whose extensibility changes according to temperature fluctuations, the fabric may crease slightly what is not a manufacturing defect. The fabric is successively used for sofas.



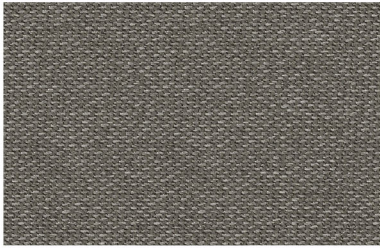
Lisboa 07



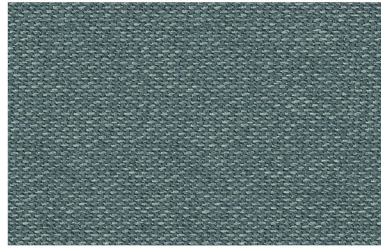
Lisboa 24



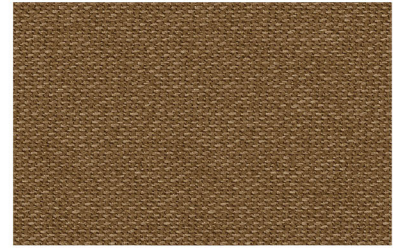
Lisboa 31



Lisboa 32



Lisboa 66



Lisboa 69



Lisboa 84

COLLECTION MACAU

FABRIC TECHNICAL DATA

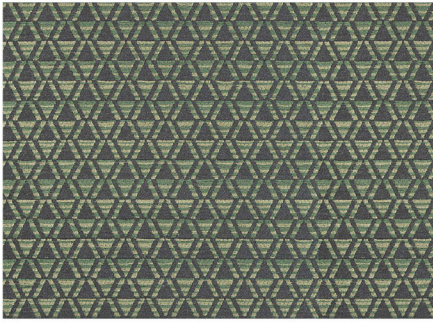
- a) fabric composition: 41% Poli acrylic, 32% Cotton, 27% Polyester
- b) weight: 425 g/sqm
- c) abrasion resistance (Martindale test): 15.000 Martindale cycles
- d) pilling resistance (1-5): 4/5

INSTRUCTIONS FOR CLEANING AND MAINTANANCE

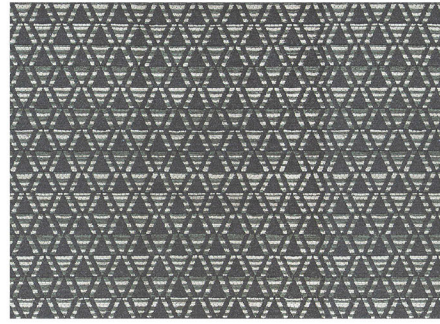
Macau is multi-color jacquard fabric with chenille yarn of a very soft surface.

In case any of any wet stains, remove dirt with a paper towel and allow fabric to dry. Do not rub the surface. In case of any extensive dirt, it can be washed at the temp. of 30°C. Before washing, the cushion cover should be turned inside out with its zipper fastened. The fabric is not suitable for bleaching, spinning, drying in a tumble dryer or in the sun. Intense or dark colors may discolor slightly. The cover may shrink gently after washing. Iron only the back side of cover at max. temp. of 110°C .

A thorough cleaning or removing substantial dirt should be entrusted to professional maintenance services companies. A proper maintenance of the fabric is one of key warranty conditions; any treatments damaging the fabric surface constitute grounds for the rejection of possible complaints.



Macau 13



Macau 205

COLLECTION MADRID

FABRIC TECHNICAL DATA

- a) fabric composition:
-100% Trevira FR
- b) weight: 379 g/m²
- c) lightfastness: 4-5
- d) pilling resistance: 5
- e) abrasion resistance (Martindale test): 24.000 Martindale cycles

INSTRUCTIONS FOR CLEANING AND MAINTANANCE

MAINTENANCE:

Jacquard fabric

Machine washable at up to 30°C

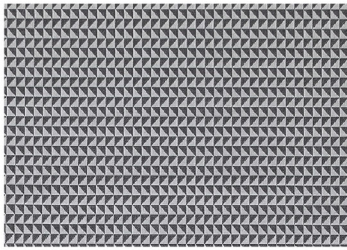
Do not bleach and spin

Do not dry in a tumble dryer or in the sun

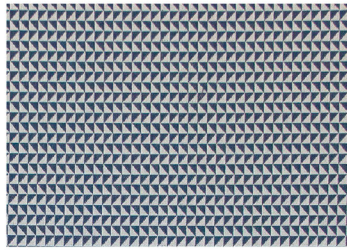
Turn the cushion cover inside out and fasten the zipper before washing

Intense and dark colours may cause slight discoloration

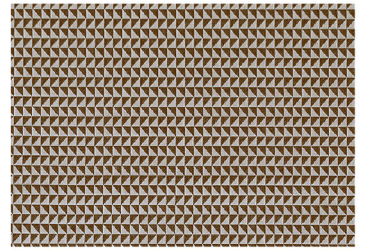
Max. ironing temperature: 110°C



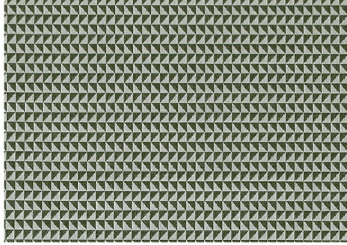
Madrid 1



Madrid 5



Madrid 10



Madrid 12



COLLECTION MIRO

FABRIC TECHNICAL DATA

- a) fabric composition: 100% Polyester
- b) weight: 461 g/sqm
- c) abrasion resistance (Martindale test): 60.000 Martindale cycles
- d) pilling resistance (1-5): 3-4
- e) fastness to light (1-5): 4-5

INSTRUCTIONS FOR CLEANING AND MAINTANANCE

CHARACTERISTICS:

- very soft and nice in touch with chenille thread
- surface of relief weave structure and rich colors
- different colours of weft and warp give the fabric a noble appearance
- natural colours make it suitable for every interior
- highly breathable
- high comfort of use in every season of the year

MAINTENANCE:

Due to the thick and loose weave, the MIRO fabric requires particularly careful cleaning. We suggest very gentle cleaning with a soft nozzle. It does not feature any chemical end-use finish protecting against water absorbing or staining. In case of any minor stains, the fabric should be wiped quickly with a dry cloth. Avoid rubbing against a damp surface. The fabric is not machine or hand washable.

In case any slight stains appear the fabric should be immediately wiped with a dry cloth. Avoid an excessive rubbing against a damp fabric.

A thorough cleaning or removing substantial dirt should be assigned to professional maintenance services companies.

A proper maintenance of the fabric is one of key warranty conditions; any treatments damaging the fabric surface constitute grounds for the rejection of possible complaints.

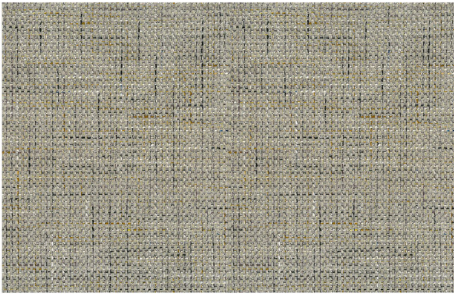
During use the fabric may stretch gently; this is not a defect of the fabric but its natural feature.

Shades of fabric swatches and those of a furniture covering may vary slightly, that is why each piece of furniture is fitted with a fabric sample to match the right shade in case of the claim.

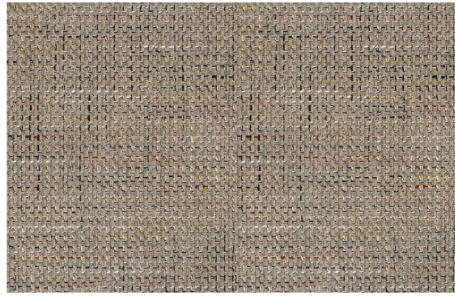
APPLICATION:

The Miro fabric has good physical-mechanical qualities what ensures its versatile application. It perfectly sticks to the furniture surface. Its soft surface of braid structure looks marvelously on both classic as well as modern furniture.

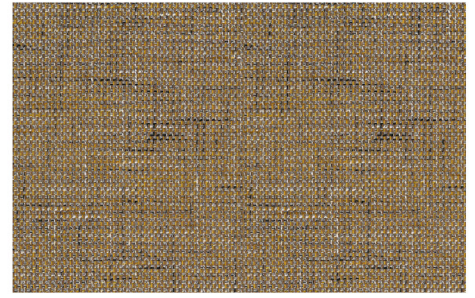
In case of combining fabric with natural or artificial leather whose extensibility is higher and changes under temperature, the fabric may slightly crease what is not a manufacturing defect.



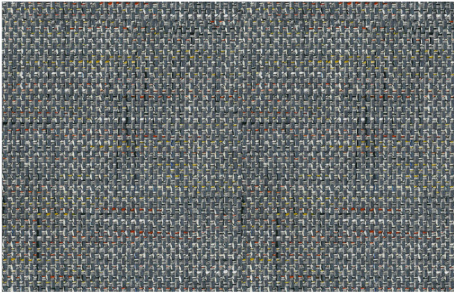
Miro 01



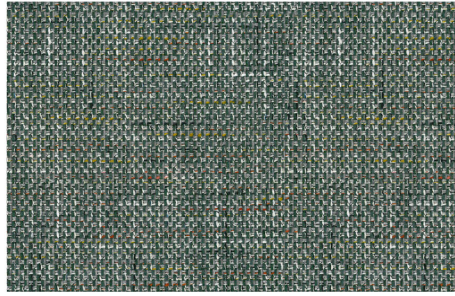
Miro 06



Miro 07



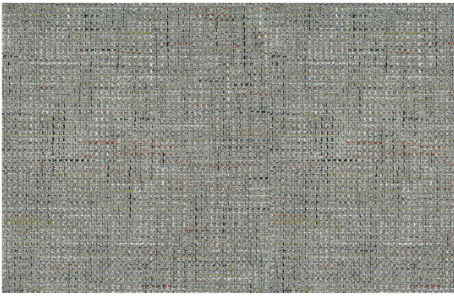
Miro 14



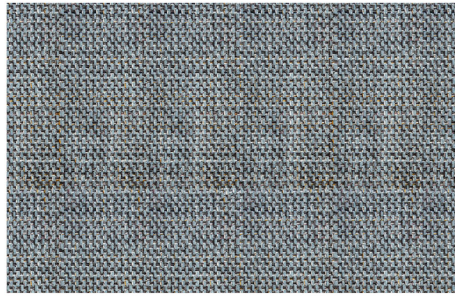
Miro 15



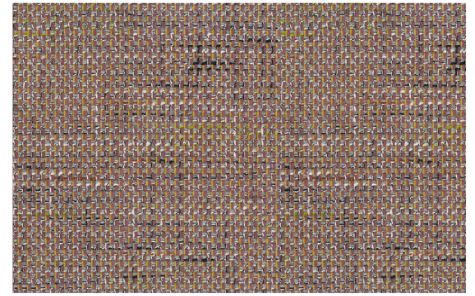
Miro 16



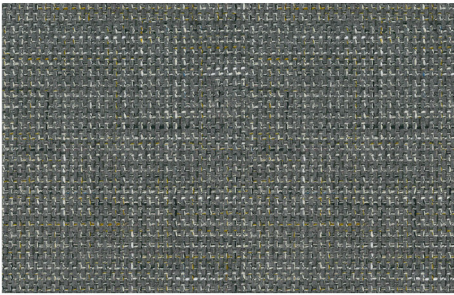
Miro 19



Miro 21



Miro 80



Miro 205



COLLECTION MOSAIC

FABRIC TECHNICAL DATA

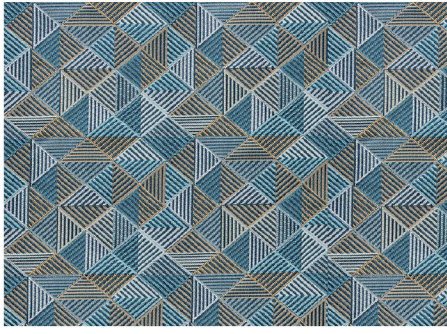
- a) fabric composition: 100% Polyester
- b) weight: 331 g/sqm
- c) abrasion resistance (Martindale test): 80.000 Martindale cycles
- d) pilling resistance (1-5): 4/5

INSTRUCTIONS FOR CLEANING AND MAINTANANCE

Mosaic is a multi-colored jacquard fabric with a smooth, slightly shiny surface.

In case any of any wet stains, remove dirt with a paper towel, spray some water on the stain and wipe off with a dry cloth. Do not rub the surface. In case of any extensive dirt, it can be washed at the temp. of 30°C. Before washing, the cushion cover should be turned inside out with its zipper fastened. The fabric is not suitable for bleaching, spinning, drying in a tumble dryer or in the sun. Intense or dark colors may discolor slightly. The cover may shrink gently after washing. Iron only the back side of cover at max. temp. of 110°C .

A thorough cleaning or removing substantial dirt should be entrusted to professional maintenance services companies. A proper maintenance of the fabric is one of key warranty conditions; any treatments damaging the fabric surface constitute grounds for the rejection of possible complaints.



Mosaic 02



Mosaic 04

COLLECTION PASEO

FABRIC TECHNICAL DATA

- a) fabric composition:
 - 66% Polyacrylonitrile
 - 34% Polyester
- b) weight: 360 g/m²
- c) lightfastness: 7
- d) pilling resistance: 4-5
- e) abrasion resistance (Martindale test): 35.000 Martindale cycles
- f) stain protection: Teflon

INSTRUCTIONS FOR CLEANING AND MAINTANANCE

MAINTENANCE:

Jacquard fabric

Machine washable at up to 30°C

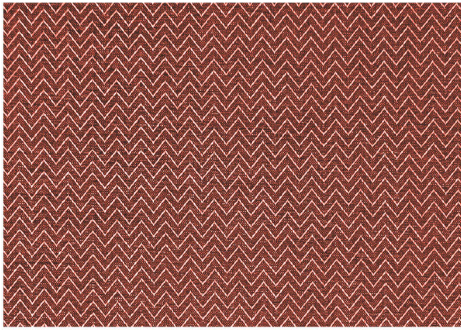
Do not bleach and spin

Do not dry in a tumble dryer or in the sun

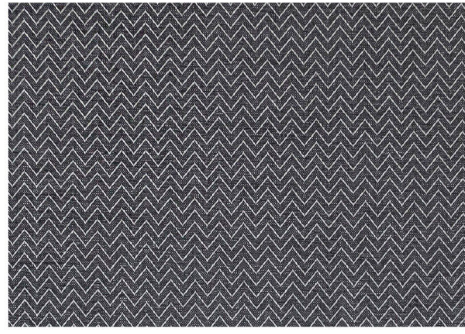
Turn the cushion cover inside out and fasten the zipper before washing

Intense and dark colours may cause slight discoloration

Iron only the back side of the cover at max. 110°C



Passeo 41



Passeo 71

COLLECTION PIANO

FABRIC TECHNICAL DATA

- a) fabric composition:
 - frontal side: 85% Polyester, 15% Nylon
 - back side: 100% Polyester
- b) weight: 353 g/sqm
- c) abrasion resistance (Martindale test): 25.000 Martindale cycles
- d) pilling resistance (1-5): 3/4

INSTRUCTIONS FOR CLEANING AND MAINTANANCE

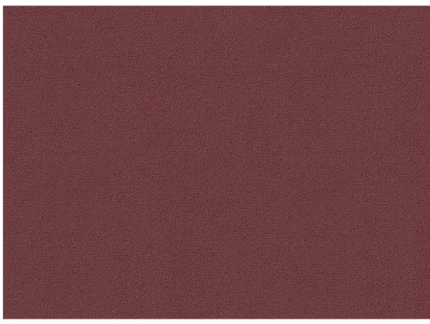
CHARACTERISTICS:

- Soft fabric, nice to touch
- Smooth, mat surface imitates suede
- Natural colors make it matches any interior
- Breathable; soft underlay raises usage comfort
- Guarantees a high comfort of use at any time of the year

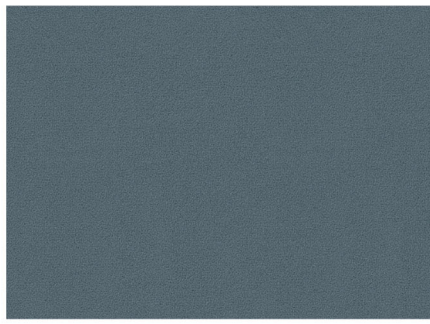
MAINTENANCE:

A gentle vacuuming with a very soft nozzle is recommended. In case any slight stains appear, wipe the fabric immediately with a dry cloth. Avoid an excessive rubbing against a damp fabric.

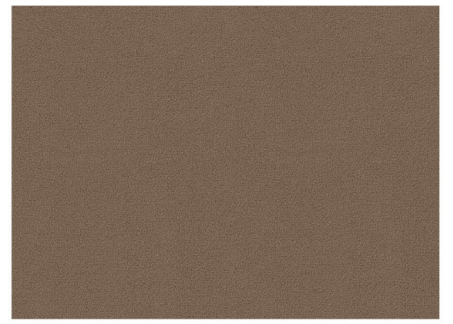
A thorough cleaning or removing substantial dirt should be entrusted to professional maintenance services companies. A proper maintenance of the fabric is one of key warranty conditions; any treatments damaging the fabric surface constitute grounds for the rejection of possible complaints. Shades of fabric swatches and those of the furniture covering may vary slightly.



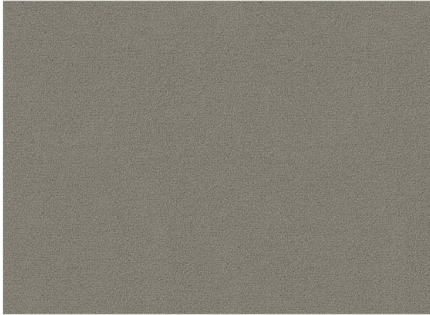
Piano 02



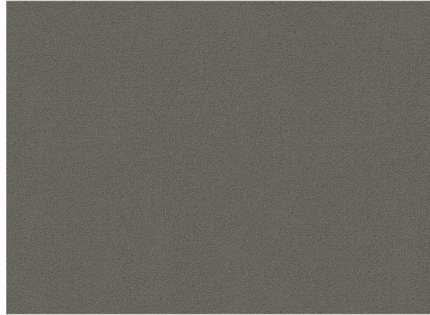
Piano 04



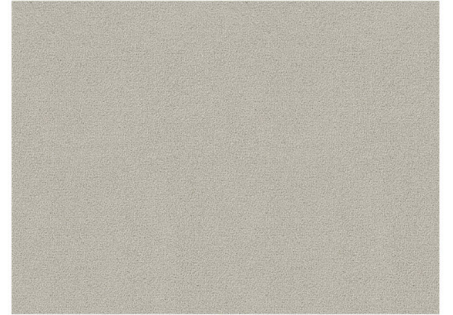
Piano 10



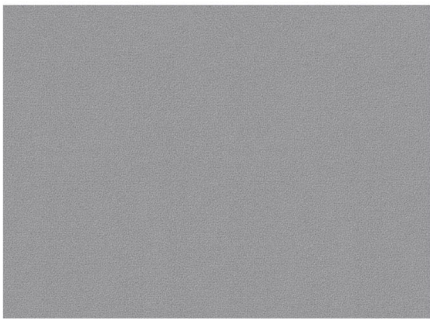
Piano 11



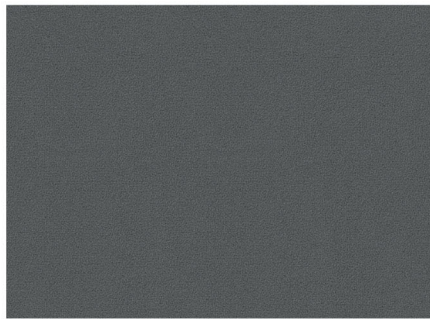
Piano 12



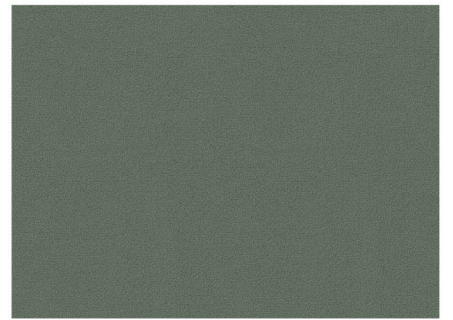
Piano 15



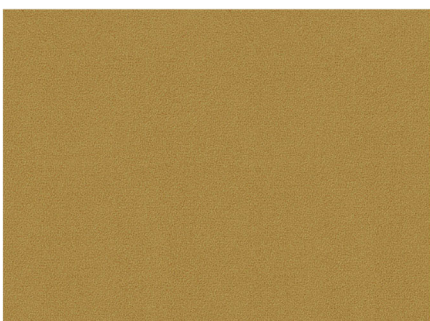
Piano 16



Piano 17



Piano 24



Piano 715

COLLECTION RAIN

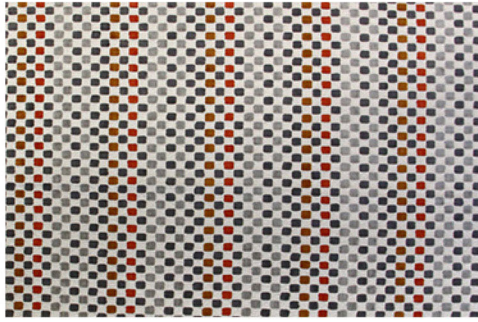
FABRIC TECHNICAL DATA

- a) fabric composition:
 - 44% Polyester
 - 56% Viscose
- b) weight: 528 g/m²
- c) lightfastness: 4-5
- d) pilling resistance: 4-5
- e) abrasion resistance (Martindale test): 20.000 Martindale cycles

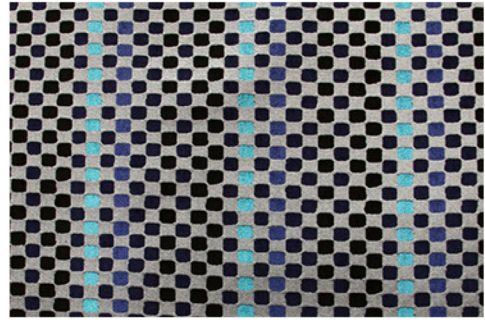
INSTRUCTIONS FOR CLEANING AND MAINTANANCE

MAINTENANCE:

- Jacquard fabric
- Machine washable at up to 30°C
- Do not bleach and spin
- Do not dry in a tumble dryer or in the sun
- Turn the cushion cover inside out and fasten the zipper before washing
- Intense and dark colours may cause slight discoloration
- Iron only the back side of the cover at max. 150°C



Rain 02



Rain 04

COLLECTION RIVER

FABRIC TECHNICAL DATA

- a) fabric composition:
 - frontal side: 100% Polyester
- b) weight: 560 g/sqm
- c) abrasion resistance (Martindale test): 23.000 Martindale cycles
- d) pilling resistance (1-5): 4

INSTRUCTIONS FOR CLEANING AND MAINTANANCE

CHARACTERISTICS:

- very soft and nice to touch; combined with chenille fiber
- surface of relief weave structure
- different shades of thread and warp ensure a noble look
- highly breathable
- anti-frayed and shrinkage-resistant
- does not attract dust
- rich colours make it suitable for every interior

MAINTENANCE:

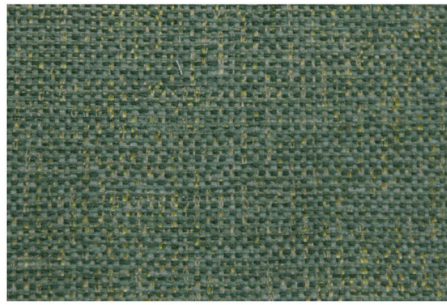
To keep it in good condition we suggest a gentle vacuuming with a soft nozzle. In case any slight stains appear the fabric should be immediately wiped with a dry cloth. Avoid an excessive rubbing against a damp fabric. A thorough cleaning or removing substantial dirt should be assigned to professional maintenance services companies. A proper maintenance of the fabric is one of key warranty conditions; any treatments damaging the fabric surface constitute grounds for the rejection of possible complaints. During use the fabric may stretch gently; this is not a defect of the fabric but its natural feature. Shades of fabric swatches and those of a furniture covering may vary slightly, that is why each piece of furniture is fitted with a fabric sample to match the right shade in case of the claim.

APPLICATION:

The River fabric has excellent physical-mechanical qualities what ensures its versatile application. It perfectly sticks to the furniture surface. Its soft surface of braid structure looks marvelously on both classic as well as modern furniture. In case of combining fabric with natural or artificial leather whose extensibility is higher and changes under temperature, the fabric may crease slightly what is not a manufacturing defect.



River 02



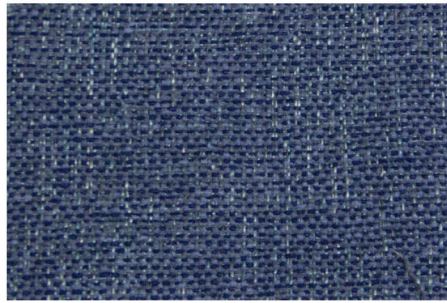
River 16



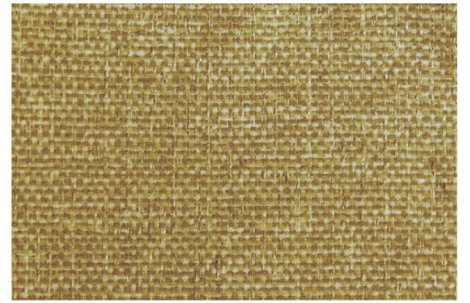
River 17



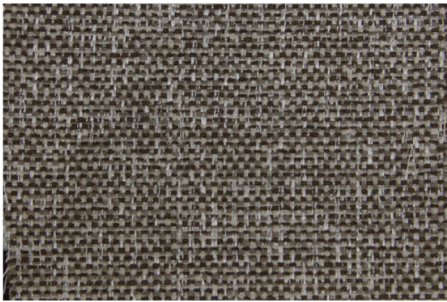
River 20



River 22



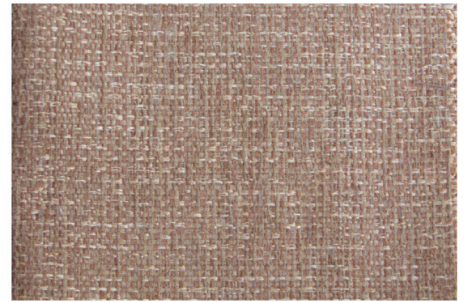
River 56



River 65



River 66



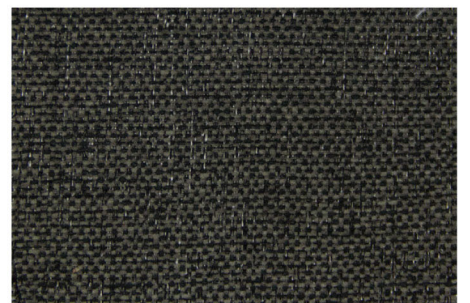
River 71



River 72



River 80



River 83

COLLECTION SAHARA

FABRIC TECHNICAL DATA

- a) fabric composition: 100% Polyester
- b) weight: 310g/sqm
- c) abrasion resistance (Martindale test): 30.000 Martindale cycles
- d) pilling resistance (1-5): 5

INSTRUCTIONS FOR CLEANING AND MAINTANANCE

CHARACTERISTICS:

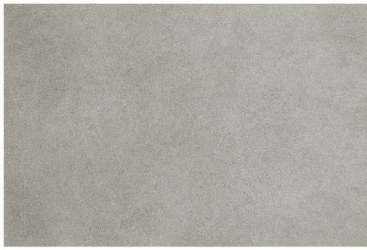
Eco-fabric imitating natural leather
Smooth, soft, nice in touch
Irregular print imitating natural leather
Breathable
High comfort in use in all seasons
Pilling- and abrasion-resistant
Resistant to shrinkage

MAINTENANCE:

The appearance of SAHARA fabric resembles natural leather. For a greater softness and use comfort the fabric is glued with a thick, brushed polyester knitwear. It has an excellent air permeability properties; its color and finish perfectly imitate natural leather. To keep fabric in good condition we suggest vacuum cleaning with a soft nozzle. In case any slight stains appear the fabric should be immediately wiped with a dry cloth. Avoid an excessive rubbing against a damp fabric. The structure of fabric makes it may discolor slightly. A thorough cleaning or removing substantial dirt should be assigned to professional maintenance services companies. A proper maintenance of the fabric is one of key warranty conditions; any treatments damaging the fabric surface constitute grounds for the rejection of possible complaints. During use the fabric stretches gently what makes some slight folds; this is not a defect of the fabric but its natural feature. Shades of fabric swatches and those of a furniture covering may vary slightly, that is why each piece of furniture is fitted with a fabric sample to match the right shade in case of the claim.

APPLICATION:

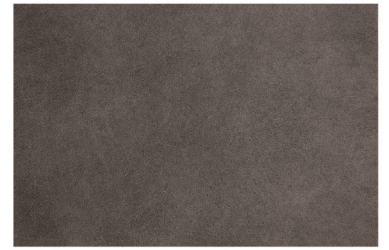
The Sahara fabric has excellent physical-mechanical qualities. It is particularly recommended for bases and armrests as well as for cushions with quilts and decorative stitches. Due to its good air permeability it can freely be used for seats and backrests. It perfectly sticks to the furniture surface. It may crease slightly during use what is not its manufacturing defect.



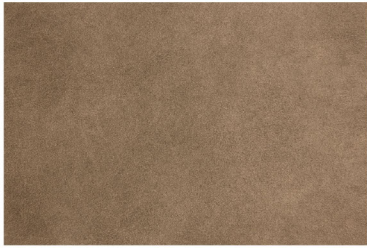
Sahara 5



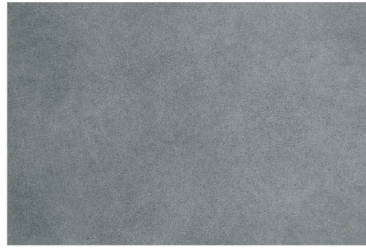
Sahara 09



Sahara 10



Sahara 11



Sahara 18



Sahara 19



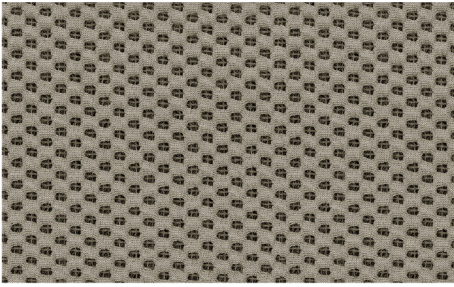
Sahara 23

COLLECTION SINTRA

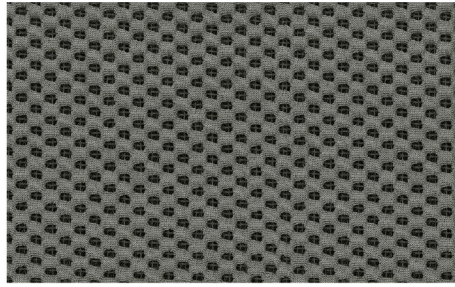
FABRIC TECHNICAL DATA

- a) fabric composition: 100% Polyester
- b) weight: 550 g/sqm
- c) abrasion resistance (Martindale test): 120.000 Martindale cycles
- d) pilling resistance (1-5): 5

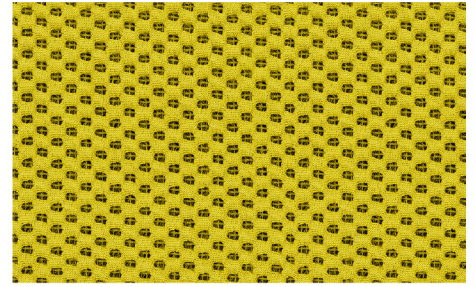
CATEGORY H



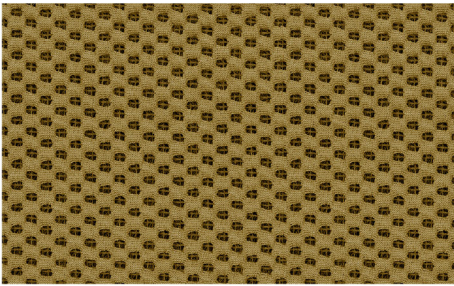
Sintra 02



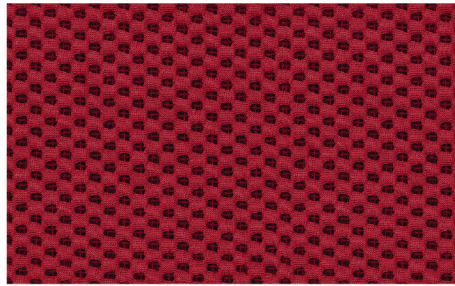
Sintra 03



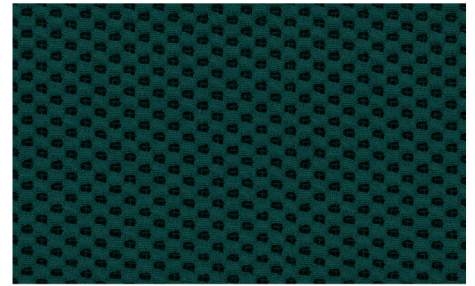
Sintra 04



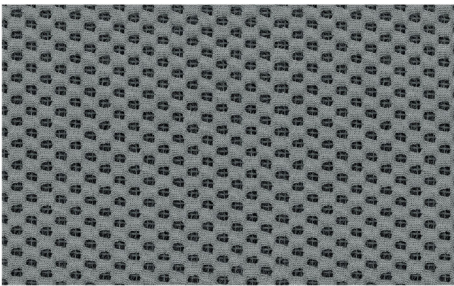
Sintra 05



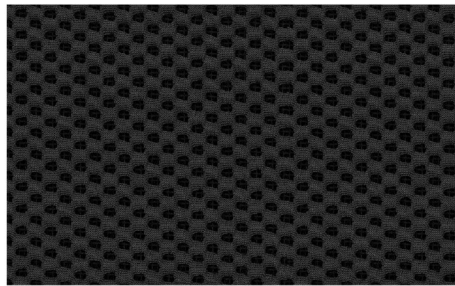
Sintra 08



Sintra 13



Sintra 16



Sintra 17

COLLECTION SOLEO

FABRIC TECHNICAL DATA

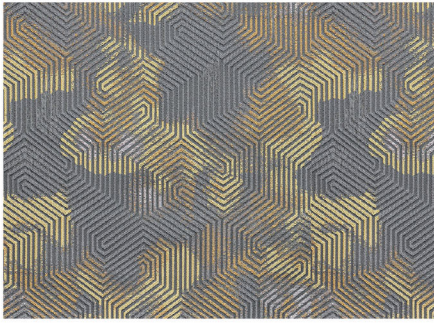
- a) fabric composition: 100% Polyester
- b) weight: 414 g/sqm
- c) abrasion resistance (Martindale test): 7000 Martindale cycles
- d) pilling resistance (1-5): 5

INSTRUCTIONS FOR CLEANING AND MAINTANANCE

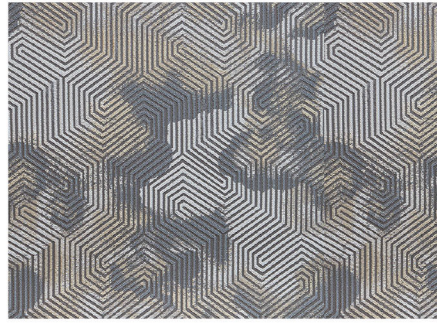
Soleo is a multi-colored jacquard fabric with a slightly shiny, relief surface.

In case any of any wet stains, remove dirt with a paper towel, spray some water on the stain and wipe off with a dry cloth. Do not rub the surface. In case of any extensive dirt, it can be washed at the temp. of 30°C. Before washing, the cushion cover should be turned inside out with its zipper fastened. The fabric is not suitable for bleaching, spinning, drying in a tumble dryer or in the sun. Intense or dark colors may discolor slightly. The cover may shrink gently after washing. Iron only the back side of cover at max. temp. of 110°C .

A thorough cleaning or removing substantial dirt should be entrusted to professional maintenance services companies. A proper maintenance of the fabric is one of key warranty conditions; any treatments damaging the fabric surface constitute grounds for the rejection of possible complaints.



Soleo 04



Soleo 09



COLLECTION TORINO

FABRIC TECHNICAL DATA

- a) fabric composition:
 - frontal side: 100% Polyester
- b) weight: 560 g/sqm
- c) abrasion resistance (Martindale test): 54.000 Martindale cycles
- d) pilling resistance (1-5): 4-5

INSTRUCTIONS FOR CLEANING AND MAINTANANCE

MAINTENANCE:

Jacquard fabric

Machine washable at up to 30°C

Do not bleach and spin

Do not dry in a tumble dryer or in the sun

Turn the cushion cover inside out and fasten the zipper before washing

Intense and dark colours may cause slight discoloration

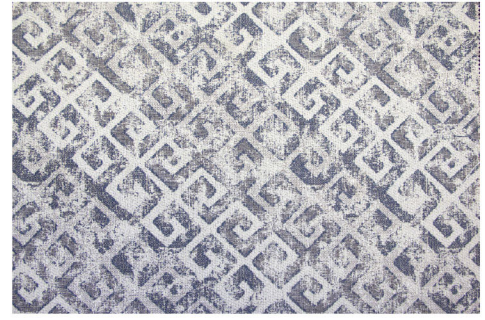
Iron only the back side of the cover at max. 110°C



Torino 514



Torino 520



Torino 541

COLLECTION VENUS

FABRIC TECHNICAL DATA

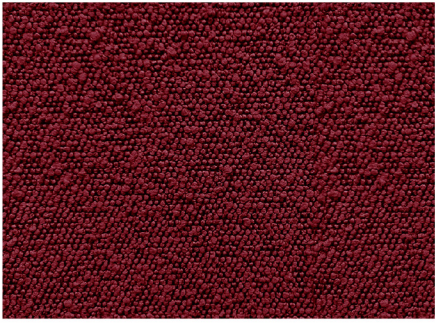
- a) fabric composition: 100% PES
- b) weight: 605 g/sqm
- c) abrasion resistance (Martindale test): 100.000 Martindale cycles
- d) pilling resistance (1-5): 4

INSTRUCTIONS FOR CLEANING AND MAINTANANCE

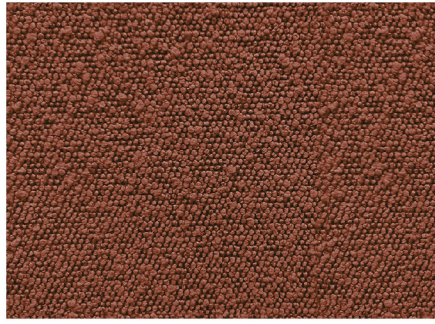
Venus is a bouclé yarn fabric with a soft loop structure.

In case any of any wet stains, remove dirt with a paper towel, spray some water on the stain and wipe off with a dry cloth. Do not rub the surface. In case of any extensive dirt, it can be washed at the temp. of 30°C. Before washing, the cushion cover should be turned inside out with its zipper fastened. The fabric is not suitable for bleaching, spinning, drying in a tumble dryer or in the sun. Intense or dark colors may discolor slightly. The cover may shrink gently after washing. Fabric should not be ironed.

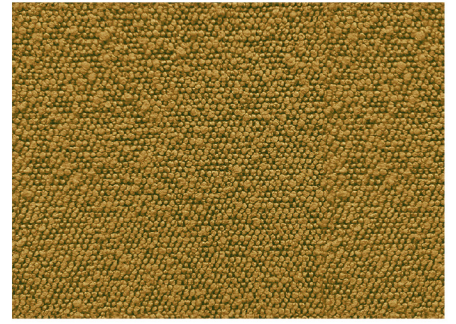
A thorough cleaning or removing substantial dirt should be entrusted to professional maintenance services companies. A proper maintenance of the fabric is one of key warranty conditions; any treatments damaging the fabric surface constitute grounds for the rejection of possible complaints.



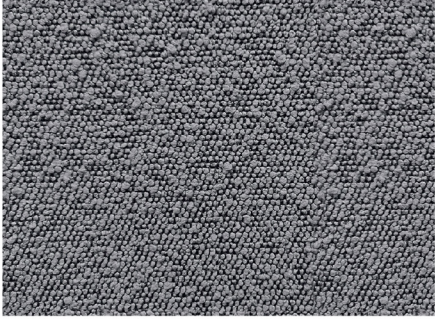
Venus 201



Venus 304



Venus 400



Venus 802



Venus 901



108

158

103

127

142

223

280



STELLA Sp. z o.o.
ul. Pabianicka 184/186
PL - 93-402 Łódź

tel.: +48 42 633 82 03
fax: +48 42 29 29 411



V01/2022

Dans un souci d'amélioration continue de ses produits et de façon à en maintenir la conformité en accord avec les textes de loi la société Stella Sp. z o.o. se réserve le droit de changer à tout moment les coloris, modèles, dimensions et fonctions présentées dans le présent catalogue. L'offre présentée dans ce catalogue ne s'entend pas comme une proposition commerciale au sens du code civil. Le catalogue est publié à but informatif et du fait des limitations liées aux techniques d'impression les coloris reproduits peuvent différer de la réalité.

On the way of continuous improvement of its products and to maintain product conformity with the laws Stella Sp. z o.o. reserves the right to change at any time colors, models, dimensions and functions shown in this catalogue. The offer presented in this catalogue isn't to be taken as a commercial offer in the civil code meaning. The catalogue is published for informational purposes and due to technical limitations of offset printing the colors reproduced can differ from reality.